



---

**MARK MORRIS DANCE GROUP**  
AUGUST 1 - 12, 2023

---

Season Sponsor:





The Joyce Theater Foundation presents

# MARK MORRIS DANCE GROUP

## MARK MORRIS DANCE GROUP

MICA BERNAS SAM BLACK KARLIE BUDGE ELISA CLARK  
BRANDON COURNAV DOMINGO ESTRADA, JR. BRIAN LAWSON  
COURTNEY LOPES TAÍNA LYONS MATTHEW MCLAUGHLIN  
DALLAS MCMURRAY MAILE OKAMURA\* BRANDON RANDOLPH  
NICOLE SABELLA CHRISTINA SAHAIDA BILLY SMITH NOAH VINSON

*\*understudy*

## MMDG MUSIC ENSEMBLE

COLIN FOWLER DAVID STEVENS NICHOLAS TAVANI

## AEOLUS QUARTET

CAITLIN LYNCH ALAN RICHARDSON RACHEL SHAPIRO NICHOLAS TAVANI

## ARTISTIC DIRECTOR

MARK MORRIS

## EXECUTIVE DIRECTOR

NANCY UMANOFF

### Official Tour Sponsor

Bloomberg Philanthropies

Major support for the Mark Morris Dance Group is provided by members of the **GRAND DUO CIRCLE** with annual gifts of \$12,000 or more. **HERO** \$500,000+ Elizabeth Amy Liebman, The New York State Council on the Arts with the support of the Office of the Governor and the New York State Legislature\*. **LEADER** \$125,000-\$249,999 Bloomberg Philanthropies\*, Judith R. and Alan H. Fishman\*, The Howard Gilman Foundation, Suzy Kellems Dominik, The Shelby and Frederick Gans Foundation. **STAR COLLABORATOR** \$50,000-\$124,999 Anonymous\*, The Beth and Ravenel Curry Foundation\*, Dance/NYC's New York City Dance Rehearsal Space Subsidy Program, made possible by The Mellon Foundation\*, Laurie M. Tisch Illumination Fund\*, Meyer Sound Laboratories, Inc., The New York City Department of Cultural Affairs in Partnership with the City Council\*, PARC Foundation\*, The Fan Fox & Leslie R. Samuels Foundation, The Shubert Foundation, Jane and R. L. Stine\*. **STAR SPONSOR** \$25,000-\$49,999 Jody and John Arnhold, The Cornelia T. Bailey Foundation, Billy Rose Foundation, The Great Island Foundation, The National Endowment for the Arts, Jamie Gorelick and Richard Waldhorn\*, John and Tommye Ireland (in memoriam)\*, Isaac Mizrahi and Arnold Germer\*, The SHS Foundation, David Resnicow and Diane Solway\*. **STAR SUPPORTER** \$12,000-\$24,999 The Gladys Krieble Delmas Foundation, Susan DeLong, Mrs. Candace and Dr. Vincent Gaudiani, Lynn Glaser\*, Bernard F. and Alva B. Gimbel Foundation, York-Chi and Stephen Harder\*, Manson Family and Stanley J. Wertheimer Fund Donors, Lucy Bowen McCauley, Kristine Morris\*, Mark Morris, Parkinson's Foundation, The Sence Foundation, Gabriel and Jolie Schwartz, Mary Ann Casavant and Scott R. Wilson, and with special thanks to the Rolex Protégé Arts Initiative.

---

Leadership support for The Joyce Theater Foundation has been received from the  
LuEsther T. Mertz Charitable Trust.

Champion support for The Joyce's annual programming has been provided by  
Howard Gilman Foundation and The Shubert Foundation.

Champion support for The Joyce's Creative Residencies Program supporting  
choreographers and dance companies has been provided by Mellon Foundation.

The Joyce gratefully acknowledges Doris Duke Foundation for its generous endowment funding  
to support dance performances at The Joyce Theater. Major support for this engagement  
was provided through a grant from The Fan Fox & Leslie R. Samuels Foundation  
to encourage the performance of New York City-based companies at The Joyce Theater.

Major support for The Joyce has been provided by Catskill Mountain Foundation,  
Ford Foundation, MacMillan Family Foundation,  
The Harkness Foundation for Dance, and The SHS Foundation.

# ABOUT THE PROGRAMS

---

## PROGRAM A

(TUES, 8/1 - SAT, 8/5)

### ***Numerator***

**Music:** Lou Harrison – *Varied Trio for violin, piano, and percussion*

**Costume Design:** Elizabeth Kurtzman

**Lighting Design:** Nick Kolin

*Gending*

*Bowl Bells*

*Elegy*

*Rondeau, in honor of Fragonard*

*Dance*

Nicholas Tavani, *violin*    Colin Fowler, *piano*    David Stevens, *percussion*

DOMINGO ESTRADA, JR., MATTHEW MCLAUGHLIN, DALLAS MCMURRAY,  
BRANDON RANDOLPH, BILLY SMITH, NOAH VINSON

Premiere: June 26, 2017 – Tanglewood Music Center, Seiji Ozawa Hall, Lenox, MA.

*Music by arrangement with Frog Peak, publisher.*

### ***A Wooden Tree***

**Music & Words:** Ivor Cutler

*Here's A Health For Simon    Stick Out Your Chest    The Market Place*  
*Rubber Toy    Trouble, Trouble    Little Black Buzzer    I Got No Common Sense*  
*Deedle, Deedle, I Pass    A Wooden Tree    Phonic Poem    I'm Going In A Field*  
*I Love You But I Don't Know What I Mean    Beautiful Cosmos    Cockadoodledon't*

**Costume Design:** Elizabeth Kurtzman

**Lighting Design:** Michael Chybowski

MICA BERNAS, KARLIE BUDGE, TAÍNA LYONS, DALLAS MCMURRAY,  
BRANDON RANDOLPH, NICOLE SABELLA, BILLY SMITH, NOAH VINSON

Premiere: October 4, 2012 – Merrill Wright Mainstage Theater, On the Boards, Seattle, WA.

*Music used by arrangement with The Estate of Ivor Cutler, publisher and copyright owner.*

- INTERMISSION -

### ***Italian Concerto***

**Music:** Johann Sebastian Bach – *Italian Concerto in F Major, BWV 971*

**Lighting Design:** Paul Palazzo

*I. Allegro*

*II. Andante*

*III. Presto*

Colin Fowler, *piano*

SAM BLACK, COURTNEY LOPES, DALLAS MCMURRAY,  
BRANDON RANDOLPH, CHRISTINA SAHAIDA

Premiere: January 17, 2007 – James and Martha Duffy Performance Space, Mark Morris Dance Center, Brooklyn, NY.

## ***Grand Duo***

**Music:** Lou Harrison – *Grand Duo for Violin and Piano*

**Costume Design:** Susan Ruddle

**Lighting Design:** Michael Chybowski

*Prelude*

*Stampede*

*A Round*

*Polka*

Nicholas Tavani, *violin*    Colin Fowler, *piano*

MICA BERNAS, KARLIE BUDGE, ELISA CLARK, DOMINGO ESTRADA, JR.,  
BRIAN LAWSON, COURTNEY LOPES, TAÍNA LYONS, MATTHEW MCLAUGHLIN,  
DALLAS MCMURRAY, BRANDON RANDOLPH, NICOLE SABELLA,  
CHRISTINA SAHAIDA, BILLY SMITH, NOAH VINSON

Premiere: February 16, 1993 – Fine Arts Center, University of Massachusetts, Amherst, MA.

## PROGRAM B

(TUES, 8/8 - SAT, 8/12)

### ***Tempus Perfectum***

STAGE PREMIERE

**Music:** Johannes Brahms – *Sixteen Waltzes, Op. 39*

**Costume Design:** Elizabeth Kurtzman

**Lighting Design:** Nick Kolin

Colin Fowler, *piano*

KARLIE BUDGE, COURTNEY LOPES, DALLAS MCMURRAY, NOAH VINSON

Premiere: May 6, 2021 – Live from Brooklyn live streamed performance, recorded at BRIC House, Brooklyn, NY.

## ***All Fours***

**Music:** Béla Bartók – *String Quartet No. 4*

**Costume Design:** Martin Pakledinaz

**Lighting Design:** Nicole Pearce

Aeolus Quartet—Nicholas Tavani, *violin*    Rachel Shapiro, *violin*

Caitlin Lynch, *viola*    Alan Richardson, *cello*

*I. Allegro*

MICA BERNAS, KARLIE BUDGE, DOMINGO ESTRADA, JR., TAÍNA LYONS,  
MATTHEW MCLAUGHLIN, BRANDON RANDOLPH, NICOLE SABELLA, NOAH VINSON

*II. Prestissimo, con sordino*

DALLAS MCMURRAY, BILLY SMITH

*III. Non troppo lento*

COURTNEY LOPES, DALLAS MCMURRAY, CHRISTINA SAHAIDA, BILLY SMITH

*IV. Allegretto pizzicato*

COURTNEY LOPES, CHRISTINA SAHAIDA

*V. Allegro molto*

MICA BERNAS, KARLIE BUDGE, DOMINGO ESTRADA, JR., TAÍNA LYONS,  
MATTHEW MCLAUGHLIN, BRANDON RANDOLPH, NICOLE SABELLA, NOAH VINSON

Premiere: September 12, 2003 – Zellerbach Hall, Cal Performances, Berkeley, CA.

Commissioned in part by Cal Performances.

- INTERMISSION -

## ***A minor Dance***

WORLD PREMIERE

**Music:** Johann Sebastian Bach – *Partita No. 3 in A minor, BWV 827*

**Costume Design:** Elizabeth Kurtzman

**Lighting Design:** Nick Kolin

Colin Fowler, *piano*

MICA BERNAS, DOMINGO ESTRADA, JR. (8/8, 8/9, 8/11, 8/12eve), COURTNEY LOPES,  
BRANDON RANDOLPH, NICOLE SABELLA, BILLY SMITH, NOAH VINSON (8/10 & 8/12mat)

## ***Castor and Pollux***

**Music:** Harry Partch – *Castor and Pollux*

**Staging:** Tina Fehlandt

**Costume Design:** Amy Page

**Original Lighting Design:** William C. Yehle

**Lighting Adaptation:** Nick Kolin

KARLIE BUDGE, DOMINGO ESTRADA, JR., COURTNEY LOPES, MATTHEW MCLAUGHLIN,  
DALLAS MCMURRAY, BRANDON RANDOLPH, CHRISTINA SAHAIDA, BILLY SMITH

Premiere: November 28, 1980 – Merce Cunningham Studio, New York, NY.

—

PROGRAM A *Numerator* © 2017 Discalced, Inc.; *A Wooden Tree* © 2012 Discalced, Inc.; *Italian Concerto* © 2007 Discalced, Inc.;  
*Grand Duo* © 1993 Discalced, Inc.. PROGRAM B *Tempus Perfectum* © 2021 Discalced, Inc.; *All Fours* © 2003 Discalced, Inc.;  
*A minor Dance* © 2023 Discalced, Inc.; *Castor and Pollux* © 1980 Discalced, Inc.

## ABOUT MARK MORRIS



**MARK MORRIS** was born on August 29, 1956, in Seattle, WA, where he studied with Verla Flowers and Perry Brunson. In the early years of his career, he performed with the companies of Lar Lubovitch, Hannah Kahn, Laura Dean, Eliot Feld, and the Koleda Balkan Dance Ensemble. He formed the Mark Morris Dance Group (MMDG) in 1980 and has since created over 150 works for the company. From 1988 to 1991, he was Director of Dance at Brussels' Théâtre Royal de la Monnaie, the national opera house of Belgium. In 1990, he founded the White Oak Dance Project with Mikhail Baryshnikov.

Much in demand as a ballet choreographer, Morris has created 22 ballets since 1986 and his work has been performed by companies worldwide, including San Francisco Ballet, American Ballet Theatre, Ballet am Rhein, Dusseldorf, and the Royal New Zealand Ballet. Noted for his musicality, Morris has been described as “undeviating in his devotion to music” (*The New Yorker*). He began conducting performances for MMDG in 2006 and has since conducted at Tanglewood Music Center, Lincoln Center, and BAM (Brooklyn Academy of Music). He served as Music Director for the 2013 Ojai Music Festival. He also works extensively in opera, directing and choreographing productions for the Metropolitan Opera, New York City Opera, English National Opera, and The Royal Opera, Covent Garden, among others. He was named a Fellow of the MacArthur Foundation in 1991 and has received eleven honorary doctorates to date. He has taught at the University of Washington, Princeton University, and Tanglewood Music Center. A Doris Duke Artist, Morris is a member of the American Academy of Arts and Sciences and the American Philosophical Society, and has served as an Advisory Board Member for the Rolex Mentor and Protégé Arts Initiative. He has received the Samuel H.

Scripps/American Dance Festival Award for Lifetime Achievement, the Leonard Bernstein Lifetime Achievement Award for the Elevation of Music in Society, the Benjamin Franklin Laureate Prize for Creativity, the International Society for the Performing Arts' Distinguished Artist Award, Cal Performances Award of Distinction in the Performing Arts, the Orchestra of St. Luke's Gift of Music Award, and the 2016 Doris Duke Artist Award. In 2015, Morris was inducted into the Mr. and Mrs. Cornelius Vanderbilt Whitney Hall of Fame at the National Museum of Dance in Saratoga Springs, New York. Morris opened the Mark Morris Dance Center in Brooklyn, New York, in 2001 to provide a home for his company, subsidized rental space for local artists, community education programs for children and seniors, and a school offering dance classes to students of all ages and levels of experience with and without disabilities. Morris' memoir, *Out Loud*, co-written with Wesley Stace, was published in paperback by Penguin Press in October 2021.

## MARK MORRIS DANCE GROUP

The **MARK MORRIS DANCE GROUP** was formed in 1980 and gave its first performance that year in New York City. The company's touring schedule steadily expanded to include cities in the United States and around the world, and in 1986 it made its first national television program for the PBS series *Dance in America*. In 1988, MMDG was invited to become the national dance company of Belgium and spent three years in residence at the Théâtre Royal de la Monnaie in Brussels. The Dance Group returned to the United States in 1991 as one of the world's leading dance companies. Based in Brooklyn, New York, MMDG maintains strong ties to presenters in several cities around the world, most notably to its West Coast home, Cal Performances in Berkeley, California, and its Midwest home, the Krannert Center for the Performing Arts at the University of Illinois at Urbana-Champaign. In New York, the company has performed at New York City Center's Fall for Dance Festival, regularly performs at Lincoln Center for the Performing Arts' Mostly Mozart and White Light Festivals, and collaborates yearly with BAM on performances and master classes. From the company's many London seasons, it has received two Laurence Olivier Awards and a Critics' Circle Dance Award for Best Foreign Dance Company. Reflecting Morris' commitment to live music, the Dance Group has featured live musicians in every performance since the formation of the MMDG Music Ensemble in 1996. MMDG regularly collaborates with renowned musicians, including cellist Yo-Yo Ma, pianist Emanuel Ax, mezzo-soprano Stephanie Blythe, and jazz pianist Ethan Iverson, as well as leading orchestras and opera companies, including the Metropolitan Opera, English National Opera, and the London Symphony Orchestra. MMDG frequently works with distinguished artists and designers, including painters Robert Bordo and the late Howard Hodgkin, set designers Adrianne Lobel and Allen Moyer, costume designers Isaac Mizrahi and the late Martin Pakledinaz, and many others. MMDG's film and television projects include *Dido and Aeneas*, *The Hard Nut*, *Falling Down Stairs*, two documentaries for the U.K.'s *South Bank Show*, and PBS' *Live from Lincoln Center*. In 2015, Morris' signature work *L'Allegro, il Penseroso ed il Moderato* had its national television premiere on PBS' *Great Performances*. While on tour the Dance Group partners with local cultural institutions and community organizations to present arts and humanities-based activities for people of all ages and abilities.

## MMDG MUSIC ENSEMBLE

The **MMDG MUSIC ENSEMBLE**, formed in 1996, is integral to the Dance Group. "With the dancers come the musicians...and what a difference it makes" (*Classical Voice of North Carolina*). The Ensemble's repertory ranges from 17th and 18th century works by John Wilson and Henry Purcell to more recent scores by Ethan Iverson, Lou Harrison, and Henry Cowell. The musicians also participate in the Dance Group's educational and community programming at home and on tour. The Music Ensemble is led by Colin Fowler, who began to collaborate with MMDG in 2005 during the creation of *Mozart Dances*.

Follow and tag us on Facebook, Twitter, and Instagram @markmorrisdance

To learn more about our work and programs, please visit [mmdg.org](http://mmdg.org)

# WHO'S WHO IN THE COMPANY

## MARK MORRIS DANCE GROUP



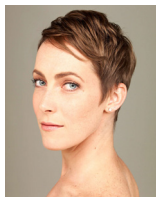
MICA  
BERNAS



SAM  
BLACK



KARLIE  
BUDGE



ELISA  
CLARK



BRANDON  
COURNEY



DOMINGO  
ESTRADA, JR.



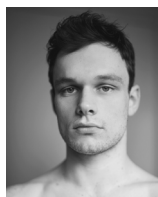
BRIAN  
LAWSON



COURTNEY  
LOPES



TA'INA  
LYONS



MATTHEW  
MCLAUGHLIN



DALLAS  
MCMURRAY



MAILE  
OKAMURA



BRANDON  
RANDOLPH



NICOLE  
SABELLA



CHRISTINA  
SAHAÏDA



BILLY  
SMITH



NOAH  
VINSON

## MUSICIANS



Aeolus Quartet  
*Strings*



Colin Fowler  
*Musical Director, Piano*



David Stevens  
*Percussion*



Nicholas Tavani  
*Violin*

# WHO'S WHO IN THE COMPANY

With performances acclaimed for both “high-octane” excitement (*Strad*) and “dusky lyricism” (*The New York Times*), the **AEOLUS QUARTET** has been awarded prizes at nearly every major competition in the United States and performed across the globe with showings “worthy of a major-league quartet” (*Dallas Morning News*). Originally formed in 2008 at the Cleveland Institute of Music, the Aeolus Quartet has performed in venues ranging from the Chamber Music Society of Lincoln Center and Lincoln Center’s Great Performer Series to Weill Recital Hall at Carnegie Hall to Dupont Underground, a subterranean streetcar station in Washington DC’s Dupont Circle. They were the 2013-2015 Juilliard Graduate Resident String Quartet and are currently Quartet-in-Residence at Musica Viva NY. In addition to extensive touring throughout the United States, their 2023-24 season includes featured performances presented by Carnegie Hall Citywide at Madison Square Park, Chamber Music Detroit, and Interlochen Center for the Arts. The Aeolus Quartet has released several critically acclaimed albums of classical and contemporary works through Naxos and Azica labels, which are available through iTunes, Amazon, and major retailers worldwide. The Quartet’s “Many-Sided Music” initiative has produced two albums in an ongoing effort to promote works by American composers. Thanks to the generosity of the Five Partners Foundation, the four members play on a set of instruments by famed Brooklyn luthier Samuel Zygmuntowicz. \*\*\*Guest cellist Alan Richardson is stepping in for Quartet cellist Jia Kim for these performances.

**COLIN FOWLER** (*Music Director, Piano*) began his musical study at the age of five in Kansas City and went on to study at the prestigious Interlochen Arts Academy. He continued his education at The Juilliard School, where he received his Bachelor of Music in 2003 and his Master of Music in 2005. While at Juilliard, he studied piano with Abbey Simon, organ with Gerre Hancock and Paul Jacobs, harpsichord with Lionel Party, and conducting with James dePriest and Judith Clurman. A versatile musician and conductor, Fowler works in many areas of the music scene in New York City. He is a veteran of numerous Broadway shows, most recently performing in the Tony Award winning musical *Jersey Boys*. A seasoned church musician, Fowler has led services at numerous houses of worship, including Trinity Wall Street, St. Thomas Church, Marble Collegiate Church, and Park Avenue Synagogue. As a classical soloist and collaborative artist, he has performed and recorded with many world-renowned musicians and ensembles, including Deborah Voigt and the Los Angeles Philharmonic. He began to collaborate with the Mark Morris Dance Group in 2005 and has since then performed over 40 pieces with the company on almost every keyboard instrument possible, including the harmonium and toy piano, and has conducted performances of *Mozart Dances*, *Acis and Galatea*, *The Hard Nut* and *L’Allegro, il Penseroso ed il Moderato*. Praised by *The New York Times* as “invaluable” and “central to Morris’ music,” he was appointed Music Director in 2013.

**SAM BLACK** (*Company Director*) is originally from Berkeley, California, and received his B.F.A. in dance from SUNY Purchase. He first appeared with MMDG in 2005 and danced with the company until 2019, when he became the Rehearsal Director. He was promoted to Company Director in 2021.

**MICA BERNAS**, originally from Manila, Philippines, received her training at the Cultural Center of the Philippines Dance School. She later joined Ballet Philippines as a member of the corps de ballet and rose up the ranks to Soloist. While at Ballet Philippines, she also studied at De La Salle University and graduated with a bachelor’s degree in organizational communication in 2006. Upon graduating, she moved to New York and joined Carolyn Dorfman Dance. She was a guest artist with the Limón Dance Company and worked with Karole Armitage, Gallim Dance, Marta Renzi, and Connecticut Ballet. As an educator, she has taught all levels of dance, including after school programs, pre-professional, and master classes. She has taught at the Limón Institute and formerly ran the dance program at BIMA at Brandeis University. She joined MMDG as a company member in 2017.

**KARLIE BUDGE** grew up in Knoxville, Tennessee, training and performing with the Tennessee Children’s Dance Ensemble. She attended Case Western Reserve University on a full scholarship from the department of dance, graduating magna cum laude with a B.A. in dance and a B.S. in statistics in 2016. Budge has performed with Graham 2, Merce Cunningham Trust, and in her own solo and duet choreography. Budge joined MMDG as an apprentice in September 2018 and became a company member in November 2019.



**ELISA CLARK**, an award-winning artist, educator, and administrator from the Washington, DC area, trained at the Maryland Youth Ballet before receiving a B.F.A. from The Juilliard School under Benjamin Harkarvy. She first performed with the Mark Morris Dance Group in 2005 and danced full-time with the company through 2011, during which time she won a Princess Grace Award. Since 2011, she's continued to be involved both on and off stage with MMDG. Clark was a founding member of Robert Battle's Battleworks Dance Company, where she also served as Company Manager, and was also a member of Alvin Ailey American Dance Theater, Lar Lubovitch Dance Company, Monica Bill Barnes & Company, and performed with Nederlands Dans Theater and the Metropolitan Opera in works by Jiri Kylian and Crystal Pite, respectively. She has been on the faculty at the School at Jacob's Pillow, Princeton University, University of the Arts, the Ailey School, Marymount Manhattan College, American Dance Festival, and at Bard College in partnership with the Gibney Company. Additionally, Clark has taught company class for the Mark Morris Dance Group, Alvin Ailey American Dance Theater, Ailey II, Ballet Hispanico, and Hubbard Street Dance Chicago, in addition to being a répétiteur/restager for Battle and Morris works.

**BRANDON COUNRAY** is a Brooklyn-based dancer, producer, choreographer, and educator. Originally from Walled Lake, Michigan, he received his B.F.A. in dance from The Juilliard School. His eclectic performance career has taken him around the globe as a dancer with the *Radio City Christmas Spectacular*, The Metropolitan Opera Ballet, Morphoses, KEIGWIN + COMPANY, and more. He has been the Associate Choreographer and répétiteur on numerous creative projects in theatre, tv/film, opera, and dance. Offstage, Courney is the Founder and Executive Artistic Director of Dance Device Lab, a company offering innovative educational experiences for dance studios nationwide and General Manager + Co-Producer of Dance Heginbotham. He joined MMDG as a company member in 2018. @brandon\_cournay / [brandoncournay.com](http://brandoncournay.com).

**DOMINGO ESTRADA, JR.**, a native of Victoria, Texas, studied martial arts and earned his black belt in 1994. He danced ballet folklórico through his church for 11 years. Estrada earned his B.F.A. in ballet and modern dance from Texas Christian University and had the honor of working with the late Fernando Bujones. During his undergraduate studies, he attended the American Dance Festival where he had the privilege of performing *Skylight*, a classic work by choreographer Laura Dean. He debuted with MMDG in 2007 and became a company member in 2009. Estrada would like to thank God, his family, and all who support his passion.

**BRIAN LAWSON** is a dance performer and educator who began dancing in Toronto, Canada. He earned his B.F.A. in dance at SUNY Purchase and while studying performed with Douglas Dunn and Dancers and the Mark Morris Dance Group. He graduated summa cum laude in 2010 and went on to work with Pam Tanowitz Dance and Dance Heginbotham before joining the Mark Morris Dance Group from 2011-18. He left MMDG to earn his M.F.A. from the University of Washington, where he graduated in 2020. Currently, he is a Visiting Assistant Professor at Skidmore College and a member of Pam Tanowitz Dance. He has served on the faculty at Cornish College of the Arts and has given masterclasses at Purchase College, New York University Tisch School of the Arts, and the American Dance Festival, among others.

**COURTNEY LOPES** is originally from Bermuda and attended the University of North Carolina School of the Arts for her high school education. She graduated magna cum laude with a B.F.A. in dance from SUNY Purchase in 2012 and studied in Taiwan at the Taipei National University of the Arts. As a student, she performed works by Paul Taylor, Jessica Lang, Lar Lubovitch, and Huang Yi of Cloud Gate Dance Theater. In addition to performing with Dance Heginbotham for over nine years, she has worked as a freelance artist with Megan Williams, Sameena Mifft, Kathryn Alter, Sue Bernhard, and Robert Mark Burke. As an educator and répétiteur, she has worked with the Mason Gross School of the Arts at Rutgers University, Ballet Tech, 92Y Harkness Dance Center, Dance for PD®, and the José Limón Institute. She first performed with MMDG in 2018 and became a company member in 2023.

**TAÍNA LYONS** is a San Pedro, California, native who began her dance training at the San Pedro Ballet School at the age of four. Her professional dance training started at the Debbie Allen Dance Academy, eventually being mentored by Debbie Allen herself. She graduated from New York University's Tisch School of the Arts with a B.F.A. in dance and a minor in Spanish in 2020. There she performed in guest works by Ronald K. Brown, Wayne McGregor, and Lar Lubovitch. In the spring of 2019, she also had the pleasure of studying abroad at the Academy of Performing Arts in Prague, Czech Republic. Since graduating, she has had the

honor of being a founding member of the Limón Dance Company's Limón2 (L2) company, an apprentice with Ronald K. Brown/EVIDENCE, as well as performing and touring with Kyle Marshall Choreography. She joined MMDG as a company member in 2022.

**MATTHEW MCLAUGHLIN** discovered movement at age one and danced hula in Hawaii until age four. As a child with parents in the military, he moved and traveled frequently and explored many different sports and art forms. He graduated from SUNY Purchase with a B.F.A. in dance. During this time, he performed works by Aszure Barton, Kevin Wynn, Kyle Abraham, George Balanchine, and Doug Varone. In 2018, he had the opportunity to perform in the Lar Lubovitch Dance Company's 50th anniversary celebration. He joined MMDG as an apprentice in 2019 and became a company member in 2021. McLaughlin would like to thank his family for their love and inspiration.

**DALLAS MCMURRAY**, from El Cerrito, California, began dancing at age four, studying jazz, tap, and acrobatics with Katie Maltzberger and ballet with Yukiko Sakakura. He received a B.F.A. in dance from the California Institute of the Arts. McMurray performed with the Limón Dance Company in addition to works by Jiří Kylián, Alonzo King, Robert Moses, and Colin Connor. McMurray performed with MMDG as an apprentice in 2006 and became a company member in 2007.

**MAILE OKAMURA**, from San Diego, California, studied ballet with Lynda Yourth and at San Francisco Ballet School. She was a member of Boston Ballet II and Ballet Arizona and has danced with MMDG since 1998. She also dances with Pam Tanowitz Dance.

**BRANDON RANDOLPH** began his training with the School of Carolina Ballet Theater in Greenville, South Carolina, under the direction of Hernan Justo. At age 14, he was accepted into the South Carolina Governor's School for the Arts and Humanities, where he studied with Stanislav Issaev and Bobby Barnett. Randolph received his B.F.A. in dance from Purchase College in 2012. There he had the opportunity to perform with Dance Heginbotham as well as repertory by Stephen Petronio, Lar Lubovitch, Paul Taylor, and George Balanchine. Randolph began working with MMDG in 2013 and became a company member in 2014.

**NICOLE SABELLA** is originally from Clearwater, Florida, where she studied at the Academy of Ballet Arts and the Pinellas County Center for the Arts at Gibbs High School under Suzanne B. Pomerantzeff. In 2009, she graduated from the University of the Arts in Philadelphia, Pennsylvania, earning her B.F.A. in modern dance performance and the "Outstanding Performance in Modern Dance" Award. She was a performer with Zane Booker's Smoke, Lilies, and Jade Arts Initiative. Sabella first performed with MMDG in 2013 and became a company member in 2015.

**CHRISTINA SAHAIDA** grew up in Pittsburgh, Pennsylvania, and began her early dance training at the Pittsburgh Ballet Theatre School. In 2012, she graduated with honors from Butler University, receiving a B.F.A. in dance performance. She has worked with Ballet Quad Cities, Texture Contemporary Ballet, and most recently the Big Muddy Dance Company in St. Louis, Missouri. Sahaida joined MMDG as an apprentice in 2017 and became a company member in 2019.

**BILLY SMITH** grew up in Fredericksburg, Virginia, and attended George Mason University under a full academic and dance talent scholarship. He graduated magna cum laude in 2007 and received achievement awards in performance, choreography, and academic endeavors. While at George Mason, he performed the works of Mark Morris, Paul Taylor, Lar Lubovitch, Doug Varone, Daniel Ezralow, Larry Keigwin, Susan Marshall, and Susan Shields. Smith's own piece, *3-Way Stop*, was selected to open the 2006 American College Dance Festival Gala at Ohio State University, and his original choreography for a production of *Bye Bye Birdie* garnered much critical praise. An actor as well, Smith's regional theater credits include *Tulsa in Gypsy*, *Mistoffeels* in *CATS*, and *Dream Curly* in *Oklahoma!*. Smith danced with Parsons Dance from 2007-2010. He joined MMDG as a company member in 2010.

**DAVID STEVENS** (*Percussion*) is a percussionist, timpanist, and educator based in New York City. As an orchestral musician, he has performed with the New York Philharmonic, the Metropolitan Opera Orchestra, the New York City Ballet Orchestra, Orchestra of St. Luke's, Orpheus Chamber Orchestra, and The Knights. Also active as a chamber musician, Stevens is a member of Exceptet and has appeared with Talea Ensemble and Argento

Chamber Ensemble. On Broadway, he has performed as a substitute percussionist in *Parade*, *Beetlejuice*, *The Phantom of the Opera*, *Into the Woods*, *Hello, Dolly!*, *An American in Paris*, and *Pippin*. He has also performed in the *Radio City Christmas Spectacular* and played cities across North America with the first national tour of *We Will Rock You – The Musical* by Queen and Ben Elton. He received his Master's degree from the Manhattan School of Music and his Bachelor's degree from The Juilliard School.

**NICHOLAS TAVANI** (*Violin*) was born in Arlington, Virginia, and debuted in Washington, D.C.'s Gaston Hall at the age of eight. The Cleveland Plain Dealer recently praised him as "an alert and sensitive artist, with beautiful tone and exquisite phrasing," and the *Washington Post* has hailed his "brilliant musicianship." As a chamber musician, recitalist, and concerto soloist, Tavani has performed extensively to critical acclaim in the United States and around the world. As first violinist of the Aeolus Quartet, he was a winner of the 2011 Plowman International Chamber Music Competition, the 2011 Yellow Springs Chamber Music competition, and the 2009 Coleman International Chamber Music Competition. He is also a laureate of the Postacchini and Kingsville International Violin Competitions. Tavani serves as first violinist in the Aeolus Quartet, who are currently Artists in Residence at Musica Viva New York. In addition, he serves as concertmaster of the New Orchestra of Washington and is a member of the Mark Morris Dance Group Music Ensemble and the Smithsonian Chamber Players.

**NOAH VINSON** is originally from Springfield, Illinois, and received his B.A. in dance from Columbia College Chicago. He was named a *Dance Magazine* "Dancer on the Rise" in 2009 and assisted Mark Morris in the creation of *The Letter V* for Houston Ballet. He began dancing with MMDG in 2002 and became a company member in 2004.

—

## MARK MORRIS DANCE GROUP STAFF

Artistic Director: Mark Morris  
Executive Director: Nancy Umanoff

### PRODUCTION

Director of Technical Production: Johan Henckens  
Lighting Supervisor: Mike Faba  
Audio Supervisor: Carl Lund  
Wardrobe Supervisor: Amy Page

### ARTISTIC

Director of Artistic Engagement: Jen Rossi  
Company Director: Sam Black  
Music Director: Colin Fowler  
Company Manager: Julia Weber  
Ballet Licensing: Tina Fehlandt  
Archivist: Stephanie Neel  
Processing Archivist: Justin Han

### ADMINISTRATION

Chief Financial Officer: Elizabeth Fox  
Finance and Budget Manager: Chris Pritchard  
Payroll Specialist: Candace Leslie  
Finance Associate: Jillian Marzloff  
Administrative Assistant: Allison Antoinette Bailey

### DEVELOPMENT

Director of Development: Michelle Amador  
Institutional Giving Manager: Haley Mason Andres  
Individual Giving Coordinator, Partners: Lauren Grant  
Individual Giving Coordinator, Friends: Zubaydah Bashir  
Data Entry Assistant: Rima Yamazaki  
Grants Assistant: Leilani Douglas

### MARKETING

Director of Marketing and Communications:  
Laura Giannatempo  
Marketing and Communications Manager: Tara Treffiletti  
Creative Content and Editorial Manager: Trevor Izzo  
Marketing and Digital Engagement Associate:  
Yingru Huang  
Marketing Assistant: Mara Cohen

### EDUCATION & COMMUNITY ENGAGEMENT

Director of Education and Community Engagement:  
Sarah Marcus  
Youth and Family Programs Director: Alexandra Cook  
Adult Programs Director: Bianca Golden  
Adult Programs Coordinator: Kyara Mahlen  
School Administrator: Lily Khan  
Community Education Programs Manager: Calvin A. Rollins II  
Dance for PD® Program Director: David Leventhal  
Dance for PD® Programs and Engagement Manager:  
Maria Portman Kelly  
Dance for PD® Managing Director: Eva Nichols  
Dance for PD® Programs Assistant: Amy Bauman  
Dance for PD® Programs Administrator: Randy Miles

### DANCE CENTER OPERATIONS

Director of Dance Center Operations: Elise Gaugert  
Studio Manager: Tiffany McCue-Frenzel  
Events & Dance Center Operations Manager: Henry Lombino  
Operations Coordinator: Lou Rasse  
Visitor Services Assistants: McCall Atkinson,  
Emma Sarah Davis, Essence Edwards, Emily Arden Jones,  
Al Parker, Chelsea Rose, Tashae Udo

Director of Facilities & Capital Projects: Mark Sacks  
Facilities Team Lead: Orlando Rivera  
Maintenance: Jaylyn Garcia, Wilson Garcia,  
Darrell Jordan, Hector Mazariegos

Booking Representation:  
Michael Mushalla (Double M Arts & Events)  
Legal Counsel: Mark Selinger (Greenberg Traurig, LLP)  
Accountant: PKF O'Connor Davies  
Orthopedist: David S. Weiss, MD (NYU Langone Health)  
Medical Advisor: Mark E. Horowitz, MD  
Physical Therapist: Harkness Center for Dance Injuries at  
NYU Langone Health and Jessica Lassiter, PT, DPT, ATC  
Hilot Therapist: Jeffrey Cohen

## BOARD OF DIRECTORS

Judith R. Fishman, *Chair*  
David Resnicow, *Vice-Chair*  
Mark Selinger, *Vice-Chair*  
Isaac Mizrahi, *Secretary*  
Sarabeth Berman  
Frederick Bland  
Mary Ann Casavant  
Margaret Conklin

Jolie Curtsinger  
Estela Diaz  
Shelby Gans  
York-Chi Harder  
Marc James  
Suzy Kellems Dominik  
Nicholas Ma  
Timothy J. McClimon

Helen Meyer  
Mark Morris  
Onay Payne  
Darryl Pinckney  
Jocelynn Rainey, Ed.D  
Nancy Umanoff  
Ellen Ofner, *Emerita*  
Jane Stine, *Emerita*

Thanks to Maxine Morris.

Sincerest thanks to all the dancers for their dedication, commitment, and incalculable contribution to the work.

Additional support provided by Mark Morris Dance Group **PARTNERS** contributing \$1,500-\$11,999 annually. **LEADING PARTNER** \$6,000-\$11,999 Anonymous (2), Wally and Roz Bernheimer, Frederick and Morley Bland\*, Terry Boyer, Jeffery and Tina Budge, Con Edison, Continental Grain Foundation, The Evelyn Sharp Foundation, Michael and Nancy Feller, Jeanne D. Fisher, Neil Ericsson and Karen Florini, Lori Raphael and J. Michael Hemmer\*, Jerome Robbins Foundation, Joseph and Joan Cullman Foundation for the Arts, Kenneth Aidekman Family Foundation, Leatherwood Foundation, William Lockwood, Jr, The Lotos Foundation, Onay Payne\*, Antony Peattie, Supernus Pharmaceuticals, The Tony Randall Theatrical Fund, Inc., Cecilia Paul and Harry Reinert, Spurnus Pharmaceuticals, Susan Sills, Sills Family Foundation, Nancy Umanoff, The Wallace Foundation Special Projects Fund at The New York Community Trust, June and Jeffrey Wolf. **COLLABORATING PARTNER** \$3,000-\$5,999 Anonymous (2), Kate Weil and Stuart Bauchner\*, Robert Litman and Sully Bonnelly, Bossak/Heibron Charitable Foundation, Carmie and Merv Budge, Cynthia A. Clegg, Harold Clinton\*, Mrs. Field's Literary Club, Carol Yorke and Gerard Conn\*, Aashishi and Devitre Dinyar, Carol Ann Dyer, Sarah and Michael Gerstenzang, John and Gillett Gilbert, Sharon Gurwitz\*, Gale Epstein, V Hansmann, The Harkness Foundation for Dance, Kate Bernheimer and Xia Hendricks, Jock Ireland, Melissa and Marc James\*, Kate and Tom Kush, Fanny van Kwawegen, Nancy Langsan, Judy Lichterman, Lily Auchincloss Foundation, Inc., Marta Hefflin Foundation, Joe Munzenrider, Ellen and Arnold Ofner\*, Janet and David Offensend, Sarabeth Berman and Evan Osnos\*, Marjorie Randolph, Patrick Ravey, Toby E. and Robert Rubin, Mark Selinger and Iris Cohen, Emmanuel Torrijos and Jing Shang Tan, Douglas D. Thomas, Jane Levy Troy\*, Mark Horowitz and Dorrine Vega, Zeitz Foundation, Barbara and Michael Zimmerman. **SPONSORING PARTNER** \$1,500-\$2,999 Anonymous (2), Jane E. Aaron, American Parkinson Disease Association, Inc., Yoko and Emanuel Ax, Katherine and Gary Bartholomous, Lane Heard and Margaret Bauer\*, Beetlejuice Tour Cast/Crew, Alan Beller, Steven Berger, Stephanie Boye, Kate Costlow and John D'Amore, Belden H. and Pamela K. Daniels, Mary Darmstaetter, John and Linda Donovan, Ed and Edie Drcar\*, Lisabeth During, Thomas Evans, Jean Fuller Farrington\*, Jay and Patricia Freeman, Lynn and Brian Grant Family, Stephen M. Foster, Carolyn George\*, Elisa and Kenneth Glazer, Robert Goldberg, Thomas Shapiro and Madeleine Grynsztejn, Juliet Burrows and Kim Hostler, Frances Ingebritson, David Iverson, Sonja Johansson, Mollie Katzen, Richard Rubinstein and Katherine Kolbert, Leslie Lassiter, Charles and Jennifer Lawson, Fred and Jean Leventhal, Laurence and Jane Levine, The Herman Liebmann Foundation, Stanley and Judith Lubman, Jennifer Melby, Emily Omura\*, Stephen Partridge, Drs. Jocelynn and Perry Rainey\*, RCL Fund, Mikhail Baryshnikov and Lisa Rinehart, Mary Kathryn and Richard Roelofs\*, Catherine Lebow and Seth Rosenberg, J. Loux and Carol Sanders, Carissa and Jack Schlosser\*, James Seely, Cindy Sherman\*, Elizabeth Rose Sledge, David Stang, Target Corporation, Grace and John Timberlake\*, Judith and Charles Tobey, Ruth and Alan Tobey, Diane and Stephen Volk, Mary Waters, Mary Ann and Ben Whitten\*, Richard Yancey, Robert and Sharon Yoerg and the more than 2,100 contributors and members giving \$1-\$1,499 annually.

**LEGACY GIVING:** Individuals who name the Mark Morris Dance Group in estate plans through bequests, gift annuities, charitable trusts, and beneficiary designations ensure a strong future for our organization. MMDG gratefully acknowledges recent living legacy commitments from Sandy Hill, Jane F. Troy, and Patrick Leader. If you're new to legacy planning, explore our free tool at [freewill.com/mmdg](http://freewill.com/mmdg). If you have already planned for MMDG in your will, please let us know so we can welcome you to our Legacy Society. Visit [freewill.com/record/mmdg](http://freewill.com/record/mmdg) to notify us of your intended support.

Mark Morris Dance Group acknowledges special gifts. **IN MEMORY** Howard Abrams, Ralph Alpert, Jean Arrington, Jean Arthur, Christine Austria, Nancy Ballin, Kilt Barnes, James Francis Barry, Michael Blackwood, Ben-Carr Blake, Arnie Belles, Lynda Cadman, Rex Kenneth Davenport, Bill Davies, June Quackenbush Denham, David Holmes Drennen, Zoltan David Farkas, Adolph Fuerst, Leonore Gordon, Mona Gottesman, Thomas Hargrove, Lawton Johnson, Herb Kaufman, Jerome M. Keefe, Dr. Carl Leventhal, Howard Levin, Harvey Lichtenstein, Marshall Markovitz, Sharon McNamarap, John O. Miller, Maxine Morris, Ellen Ofner, Bernie and Sandi Pollack, Pauline Y. Pon, K Robert Reaster, Molly Moore Reinhart, Rita Rose, Judy Rosenblatt, Judy Schonblom, Carolyn Shen, Janet Sherman, Gary Sherwood, Allyne Simmons, Eileen Stief, Nancy Snyder, Tarlow, Stanley J. Wertheimer, Raymond Wolf, Harold W. Young, Jim Young, and Donna Jean Wienecke. **IN HONOR** Amy Bauman, Harris Berman, Lucy Bowen McCauley, Sam Black, Lynda Cadman, Carmella Connelly, Alex Cook, The Dancin' Cast and Crew, Ann Feldman, Judith R. Fishman, Natasha Frazer, Sharon Friedler, Elise Gaugert, Cyndy Gilbertson, Lauren Grant, Pat Hall, Marion Yager Hamermesh, Lou Harrison, Barb Kibler, Carol Krasnow, Elaine Koss, The Kuehne Family, David Leventhal, Larry and Jane Levine, Ruth Manson and Family, Jonas Markovitz, Alison Marshall, Maria Macfarlane, Barbara Akua McAlister, Ruth Manson, Gunilla Norris, Phoebe Taubman Nerenberg Pam Patrick, Nicole Pearce, Abigail Perelman, Sharon Resen, Aunt Mireille, Louise Restagno, Calvin A. Rollins II, Tara Sherman, Susan Sills, Jeannette McMillan and Sam Singer, Edith Tinnies, Manny Torrijos, Charlie and Judy Tobey, Nancy Umanoff, Julia Weber, Olie Westheimer, Cristobal Williams, Rhonda Winfield, Sima Wolf, the superb staff of Dance for PD and the entire Mark Morris Dance Group. **DONOR ADVISED FUNDS** American Endowment Foundation, The Boston Foundation, Chevy Chase Trust Company, Community Foundation Boulder County, Fidelity Charitable Foundation, FJC – A Foundation of Philanthropic Funds, Goldman Sachs Philanthropy Fund, The Greater Cincinnati Foundation, Impact Assets, Jewish Communal Fund, Jewish Community Federation & Endowment Fund, Jewish Federation of Cleveland, JP Morgan Charitable Giving Fund, Marin Community Foundation, National Philanthropic Trust, The New York Community Trust, Schwab Charitable, Stonewall Community Foundation, Vanguard Charitable. **CORPORATE MATCHING GIFT CONTRIBUTIONS** American Express Charitable Fund, Bank of America, Brooklyn Community Foundation, CNA, Gilead, Google Matching Gift Program, International Monetary Fund, William Penn Foundation, Premera, Robert Wood Johnson Foundation, SiriusXM, TripAdvisor.

**IN KIND CONTRIBUTORS:** The Celeste Group\*, Greenberg Traurig, LLP, Mark Horowitz, M.D., Meyer Sound Laboratories, Inc.

**TICKET UNDERWRITING SPONSORS:** The Mark Morris Dance Group deeply appreciates the following contributors whose donations supported free tickets and transportation for youth and families in our community: Mary Ann Casavant and Scott Wilson, Margaret Conklin and David Sabel, Estela Diaz, Judith and Alan Fishman, York-Chi and Stephen Harder, Harkness Foundation for Dance, Aziziel Hiwot, Melissa and Mark James, Suzy Kellems Dominik, Helen and John Meyer, Niall Napier, Jennifer Novack, Onay Payne, The PNC services Financial Group Inc., Dr. Jocelynn Rainey, David Resnicow, Gabriel and Jolie Schwartz.

\* Contributors who have generously pledged multi-year support for Mark Morris **BOLD**.

The Mark Morris Dance Group is a member of the Cultural Solidarity Fund, Dance/USA, the Downtown Brooklyn Arts Alliance, and Museum Arts and Culture Access Consortium.

# ABOUT THE JOYCE THEATER FOUNDATION

The Joyce Theater Foundation ("The Joyce," Executive Director, Linda Shelton), a nonprofit organization, has proudly served the dance community for over three decades. Under the direction of founders Cora Cahan and Eliot Feld, Ballet Tech Foundation acquired and The Joyce renovated the Elgin Theater in Chelsea. Opening as The Joyce Theater in 1982, it was named in honor of Joyce Mertz, beloved daughter of LuEsther T. Mertz. It was LuEsther's clear, undaunted vision and abundant generosity that made it imaginable and ultimately possible to build the theater. Ownership was secured by The Joyce in 2015. The theater is one of the only theaters built by dancers for dance and has provided an intimate and elegant home for over 400 U.S.-based and international companies. The Joyce has also expanded its reach beyond its Chelsea home through off-site presentations at venues ranging in scope from Lincoln Center's David H. Koch Theater, to Brooklyn's Invisible Dog Art Center, and to outdoor programming in spaces such as Hudson River Park. To further support the creation of new work, The Joyce maintains longstanding commissioning and residency programs. Local students and teachers (1st-12th grade) benefit from its school program, and family and adult audiences get closer to dance with access to artists. The Joyce's annual season of about 48 weeks of dance now includes over 340 performances for audiences in excess of 150,000 patrons. **Visit [Joyce.org](http://Joyce.org) for more information.**



## Many Thanks to The Joyce's Institutional Funders for Keeping Us Moving Forward

An abundance of gratitude to Senate Majority Leader Charles E. Schumer, Senator Kirsten Gillibrand, Representative Jerrold Nadler, and Representative Nydia M. Velázquez for their visionary leadership that established the **Shuttered Venue Operators Grant** program, which has helped make the reopening of The Joyce Theater and the reemergence of many dance companies possible.

### Leadership support for The Joyce's year-round programs and services:

LuEsther T. Mertz  
Charitable Trust

### Season Sponsor:



### Champion support for The Joyce's Dance Residencies:



### Champion support for The Joyce's annual programming:



### Major support for The Joyce's American Dance Platform and Harkness First debuts:



### Major support for The Joyce's operations and special initiatives:

## Ford Foundation

The Fan Fox & Leslie R. Samuels Foundation



Foundation

### Lead corporate support:



FIRST REPUBLIC

# ABOUT THE JOYCE THEATER FOUNDATION

## VISION STATEMENT

The Joyce Theater Foundation is committed to fostering and supporting a diverse and inclusive environment, both on and off stage. We embrace and celebrate diversity in all its forms, and value the rich experiences and perspectives that arise from differences in race, ethnicity, socio-economic status, religion, age, sexual orientation, gender identity and expression, and cognitive and physical ability.

**We strive to counteract the social injustices and racism that exist within our communities, our nation, and our world. Our aim as an organization is to embody the principles of diversity, equity, inclusion, and justice.**

To achieve this, we will:

- Create and implement proactive diversity, equity, inclusion, and justice initiatives;
- Establish and maintain a culture of safe sharing, intentional listening, learning, and growth;
- Engage with and support disenfranchised communities by sharing information and resources and ensuring accessibility;
- Develop metrics and conduct regular reviews of our programs and policies to hold ourselves accountable and shift as needed.

With these goals in place and our Vision Statement in mind, we are dedicated to the continued learning and growth needed to foster an inclusive environment for all. This is an ongoing process and by nature will be an evolving statement.

## LAND ACKNOWLEDGEMENT

The Joyce Theater operates on the Lenape island of Manhahtaan (Mannahatta) and acknowledges that it was founded upon the stolen land and erasure of many Indigenous communities. This acknowledgment demonstrates our institution's commitment to the process of dismantling the legacies of colonialism and cultural imperialism.

We acknowledge the ongoing violence towards Indigenous people through systemic inequality. We pay our respect to the Indigenous peoples who lived and continue to live upon this land, and whose rich history, artistic practices, and spirituality are tied to this land. It is within our responsibility as a cultural institution and our commitment to diversity and inclusion to embody a commitment to Indigenous rights and cultural equity.

We sincerely invite you as an audience member to take a moment to reflect on the history and legacy of displacement, migration, and settlement.

It is our intention to work with local Native American arts councils to better inform our land acknowledgment practices and anticipate that it will evolve over time.

**EXECUTIVE DIRECTOR.....LINDA SHELTON**  
Assistant to the Executive Director.....Ayo Janeen Jackson

## ADMINISTRATION

**General Manager.....Huong Hoang**  
Associate General Manager.....Katy Myers  
**Human Resources Manager.....Sharonica Williams**  
Office Manager.....Christine Guglia  
**Director of Development.....OPEN**  
Director of Institutional Giving.....Jean M. Ross  
Director of Individual Giving.....Meg White  
Associate Director of Special Events.....Jesse Chin  
Individual Giving Manager.....Catherine Eng  
Institutional Giving Manager.....Brianna Anderson  
Special Events Associate.....Maeva Brady  
Development Associate.....Grace O'Brien  
**Director of Programming.....Danni Gee**  
Programming Manager.....Noa Rui-Piin Weiss  
Artist Services Manager.....Barb Domue  
Curatorial Associate.....Gregory English  
**Director of Dance Education & Family Programs.....Heather McCartney**  
Dance Education & Family Programs Assistant.....  
.....Marianne Rose Weber  
Dance Education & Family Programs Intern.....Maia Virgil

**Director of Marketing.....Andy Sheagren**  
Associate Director of Marketing Strategy.....Anjali Amin  
Digital Marketing Manager.....Julia Thornicroft  
Marketing Manager.....Nadia Halim  
Marketing Assistant.....Annie Marx  
**Director of Finance.....Margaret Hollenbeck**  
Finance Associate.....Savá M. B. Martin  
Finance Clerk.....Xavier DelValle  
Database Administrator.....Jim Seggelink  
**Director of Information Tech.....Patricia A. Yost**

## PRODUCTION

**Director of Production.....Jeff Segal**  
Lighting Supervisor.....Kelly Atallah  
Technical Director.....OPEN  
Head Audio.....Sean Mullins  
Lighting Board Operator.....Kyle Hogen  
Head Carpenter.....Web Crittenden  
Head Electrician.....Brittany Spencer  
Stage Technicians.....Edward Hill, OPEN

The Joyce Theater is a member of APAP, Dance/NYC, and Dance/USA.



## JOYCE THEATER PRODUCTIONS

**Producer.....Ross LeClair**  
Associate Producer.....Bridget Caston

## FRONT-OF-HOUSE

**Senior House Manager.....Samantha Fernandez**  
House Manager.....Lillian Cole  
Assistant House Managers.....Joseph Burke,  
Gilbert Balasa, Charis Lord-Haines, Kenneth Harlin,  
Chikako Iwahori, Di'Shai Oquendo,  
Utafumi Takemura, Nicholas Thomas

## BOX OFFICE

**Box Office Manager.....Lisa Gendell**  
Supervisors.....Beth Miller, Vanessa Moton  
Box Office/JoyceCharge Staff.....Kiersten Foster,  
Tatiana Gomez, Yulidai Hernandez Kin,  
Roy Odom, Jasmine Webb

## OPERATIONS

**Director of Operations.....Lou Albruzzese**  
Studio Manager.....Claire Westby

## FACILITIES

**Facilities Manager.....Jimmy Ortiz**  
Maintenance Staff.....Madelin Estrella,  
Yohanna Hernandez, Pablo Rodriguez

## SPECIAL SERVICES FOR THE JOYCE THEATER

Schulte Roth & Zabel LLP.....Sara E. Solfanelli (Special Counsel for Pro Bono Initiatives), Howard B. Epstein (Of Counsel), Gregory P. Pressman, Esq. (Of Counsel), Susan E. Bernstein, Esq. (Special Counsel), Cristina Giapponne, Esq., Andrew B. Lowy, Esq., Ann K. Young, Esq., Sabrina Singh, Esq.....

Stroock & Stroock & Lavan LLP.....Ross F. Moskowitz Esq.  
Frankfurt Kurnit Klein & Selz PC.....

.....Kimberly M. Maynard, Esq.,  
Glick and Weintraub PC.....Harry H. Weintraub, Counsel  
Accounting.....Lutz & Carr  
Digital Marketing Firm.....Capacity Interactive  
Publicity.....Billy Zavelson  
Printer.....Direct Printing Impressions Inc.  
Insurance.....Risk Strategies Company  
Architects.....Hugh Hardy, FAIA  
General Contractor.....Yorke Construction Corporation  
Official Flower Sponsor.....The Flower School New York

Donald J. Rose, MD Director, Harkness Center for Dance Injuries at NYU  
Langone Health is the orthopedic and dance medicine consultant for  
The Joyce Theater Foundation.

First Republic is the preferred private bank of  
The Joyce Theater Foundation.

# THE JOYCE THEATER FOUNDATION, INC.

## BOARD OF TRUSTEES

Amit Wadhwaney, *Chair*  
Charles M. Adelman, *Vice Chair*  
Stephanie R. Breslow, *Treasurer*  
Jane E. Goldberg, *Secretary*  
Kerry Clayton, *Chair Emeritus*  
Virginia A. Millhiser, *Chair Emerita*  
R. Richard Ablon  
Rob Ashford

Monica F. Azare  
John M. Basnage de Beauval  
Ajay Bhandaram  
Keane Ehsani  
Ronald Gumbaz  
Toni Hoover  
Robert Musiker  
Susan Gluck Pappajohn

Steven M. Pesner  
Meryl Rosofsky  
Saul Sanders  
Linda Shelton  
Susan Fawcett Sosin  
Lauren E. Shortt  
Monica B. Voldstad  
Madelyn Wils

### IN MEMORIAM

Theodore S. Bartwink (Trustee 1993-2014)  
Tracy Brown (Trustee 2020-2023)  
R. Britton Fisher (Trustee 1990-2020)  
David D. Holbrook (Trustee 1994-2023)

Richard Lukins (Trustee 1998-2011)  
Anh-Tuyet Nguyen (Trustee 2007-2020)  
Richard Shea (Trustee 2015-2022)  
Stephen D. Weinroth (Trustee 1996-2022)

Founders and Trustees Emeriti: Cora Cahan and Eliot Feld

## ENDOWMENT CAMPAIGN

The Joyce honors the following individuals, corporations, and foundations for their visionary support of our mission of advancing the vibrant and extraordinary art of dance. Funds contributed to the endowment campaign will allow The Joyce to continue its support of the dance community and to commission new work.

### \$1 Million and above

LuEsther T. Mertz Charitable Trust  
Lila Wallace-Reader's Digest Endowment Fund  
Stephen and Cathy Weinroth Charitable Trust

### \$500,000 and above

Doris Duke Charitable Foundation  
Richard B. Fisher and Family  
R. Britton Fisher and Family  
Rockefeller Brothers Fund

### \$250,000 and above

David & Andrea Holbrook  
Richard A. Lukins & Karen Fry  
Saul & Mary Sanders  
Susan Fawcett Sosin

### \$100,000 and above

Anonymous (1)  
Alphawood Foundation  
Kerry Clayton & Paige Royer  
The Horace W. Goldsmith Foundation  
The Estate of Dorothy Lefkof  
The William Randolph  
Hearst Foundations  
Lynne & Richard Pascualano  
Michèle & Steve Pesner  
The Fan Fox & Leslie R. Samuels Foundation  
The Starr Foundation

### \$50,000 and above

R. Richard & Margery Ablon  
Apollo Management, L.P.  
Stephanie Breslow & Paul Watterson  
The Coca-Cola Foundation  
Ronald Gumbaz & Juliet A. Cozzi  
JPMorgan Chase Foundation

Jerome A. and Estelle R.  
Newman Assistance Fund, Inc.  
Rudolf Nureyev Dance Foundation

### \$25,000 and above

Jane E. Goldberg  
Cecilia & Jim Herbert  
Jane Kendall & David Dietz  
Elysabeth Kleinhans  
Arnie & Susan Scharf  
Richard Shea  
Jennifer & Jonathan Allan Soros  
Fiona J. Tilley & Gürhan Orhan  
Dave Waks & Sandy Teger  
Chris & Lonna Yegen  
Carol Yorke & Gerard Conn

### \$5,000 and above

Anonymous (3)  
Barbara & Robert Berkley  
Philanthropic Fund  
Barbara Berliner & Sol D. Rymer  
The Cory & Bob Donnalley  
Charitable Foundation  
Jim & Linda Ellis  
Mr. & Mrs. Ira Haupt, II  
The Lawton W. Fitt & James I. McLaren Foundation  
James H. Ottaway, Jr.  
Kathleen A. Scott  
Linda Shelton  
Ferne Goldberg Sperling & Allan Sperling

## LEADERSHIP SUPPORT FOR A NEW VENUE FOR DANCE

Support for planning costs associated with establishing a third venue for dance as part of the redeveloped World Trade Center site has been generously provided by a grant from the Lower Manhattan Development Corporation, which is funded through Community Development Block Grants from the U.S. Department of Housing and Urban Development. Leadership support has also been provided by:

FORD FOUNDATION    MELLON FOUNDATION  
ROBERT STERLING CLARK FOUNDATION    THE SEPTEMBER 11TH FUND  
ALFRED P. SLOAN FOUNDATION



## JOYCE THEATER FOUNDATION DONORS

The Joyce Theater appreciates the generosity of its supporters listed below as well as its many other supporters too numerous to include on these pages. List as of May 9, 2023.

### Platinum Benefactors

(\$500,000 and above)

Howard Gilman Foundation  
LuEsther T. Mertz Charitable Trust

### Gold Benefactors

(\$100,000 and above)

Catskill Mountain Foundation  
Kerry Clayton & Paige Royer  
Ford Foundation  
The Harkness Foundation  
for Dance  
MacMillan Family Foundation  
Mellon Foundation  
Virginia & Timothy Millhiser  
National Endowment for  
the Arts / American Rescue  
Plan Act  
New York City Department  
Cultural Affairs  
Robert Pollock  
The Fan Fox and Leslie  
R. Samuels Foundation  
The Shubert Foundation  
Denise Littlefield Sobel

### Silver Benefactors

(\$75,000 and above)

First Republic Bank  
GKV Charitable Foundation  
National Endowment for the Arts

### Benefactors

(\$50,000 and above)

Jody & John Arnhold I  
Arnhold Foundation  
National Dance Project of  
the New England Foundation  
for the Arts  
New York State Council on the Arts  
Meryl Rosofsky & Stuart Coleman  
Lauren E. Shortt  
The SHS Foundation  
Amit Wadhwany

### Chairman's Circle

(\$25,000 and above)

Anonymous (2)  
Deborah & Charles Adelman  
Cornelia T. Bailey Foundation  
Stephanie R. Breslow &  
Paul Watterson  
The Gladys Krieble Delmas  
Foundation  
Susan Dickler & Sig Van Raan  
Keane Ehsani  
Jamshid & Mahsid Ehsani  
Melina Fisher  
Jane E. Goldberg  
Ronald Gumbaz & Juliet Cozzi  
Toni Hoover  
In Motion  
\*Elisabeth Kleinhans  
Leanne Lachman  
Mertz Gilmore Foundation  
Mid Atlantic Arts Foundation  
Henry and Lucy Moses Fund  
Bob & Sharon Musiker  
The O'Donnell-Green Music and  
Dance Foundation  
Susan & Greg Pappajohn  
Michèle & Steve Pesner  
The Jerome Robbins Foundation  
Saul & Mary Sanders  
Susan Fawcett Sosin  
Dance Reflections by  
Van Cleef & Arpels  
Monica Voldstad  
Cathy Weinroth  
Madelyn & Steven Wils

### Impresario's Circle

(\$10,000 and above)

Anonymous (3)  
Jen Ablon  
Alpern Family Foundation

Sarah Arison  
Barbro Osher Pro Suecia  
Foundation

John Basnage de Beauval  
Ajay Bhandaram  
Bloomberg Philanthropies  
Torrence Boone  
Robert Brenner  
Tracy Brown  
Con Edison  
John & Margaret Falk  
Nancy & Michael Feller  
\*Brandon Fradd  
Gregg & Jean Frankel  
Charles and Joan Gross  
Family Foundation  
Elzbieta Grove  
David & Andrea Holbrook  
In Honor of Karen Brooks Hopkins  
The Ivill-Weiner Family  
The Kingsley Foundation  
Melanie Coronetz & Bruce G. Miler  
\*LeConte Moore  
Tatiana Piankova Foundation  
Karen Roth  
\*Nancy Sands  
Kathleen A. Scott  
Linda Shelton  
Leslie Siegel  
Johanna Weber  
Michelle D. & Claude L. Winfield

### Presenter's Circle

(\$5,000 and above)

Anonymous (2)  
\*Rick & Nurit Amdur  
Rob Ashford  
Monica Azare  
Andrew & Froma Benerote  
\*Marty & Louise Bickman  
Donya & Scott Bommer  
Office of City Council Member  
Erik Bottcher  
Donna B. Case  
The Barbara Bell Cumming  
Charitable Trust  
Chubb LTD  
Ms. Pamela Crutchfield  
Jeffrey Davis & Michael T. Miller  
Dancers Responding to AIDS  
Linda Ellis  
Martin & Linda Fell  
\*Judith & Alan Fishman  
FUSED  
French U.S. Exchange in Dance  
Barbara Goldstein  
Paul Feuerman & Bruce Grivetti  
Mr. & Mrs. Edwin Goodman  
Sharon B. Gurwitz  
Randall & Mary Hack  
Elizabeth Anne Hartman  
Judith M. Hoffman  
Illuminated Foundation  
Christopher Jones &  
Deborah McAlister  
Christine Knuth  
Alan & Gail Koss  
Elizabeth & Neil Kurtz  
\*Jonathan Levinson  
Robert R. Littman &  
Sully Bonnelly  
Karen & Martin McDonald  
Ronay & Richard  
Menschel/  
Charina Foundation, Inc.  
\*Cherrie Nanninga  
In loving memory of Bill Perlmut, &  
Patricia Dugan Perlmut  
Rajika & Anupam Puri  
Nina B. Quigley  
Mr. Stephen Kroll Reidy  
Theresa Alessandro Russo  
Foundation  
Margaret E. Selby  
Barbara Madsen Smith  
Christopher Soule

Jean & Gene Stark  
Linda B. Strumpf  
\*Vincente Wolf

### Director's Circle

(\$2,500 and above)

Anonymous (2)  
R. Richard Ablon  
Adrienne Albert  
Joel & Rhela Aragona  
Sandra Berger  
Judi Rappoport Blitzter &  
David Blitzter  
Ralph & Martine Calder  
Victoria V. Carey  
Cathleen Collins  
Melanie Coronetz &  
Bruce G. Miller  
Mary Sharp Cronson  
Jan, Dick & Nora Demenus  
Miriam & David Donoho  
Christopher M. Elmore  
\*Paul S. Engler  
Andrew & Claire-Marine Ferguson  
Thomas von Foerster  
Rochel Gelman  
Consulate General of the Federal  
Republic of Germany in New York  
\*Dorothy Goodman  
The Harold K. Gross Family  
Charitable Trust  
Susan Ross Green  
Maya Hamlet  
Ronald E. Hellman &  
Stephen B. Roberts  
Val Holley & Joseph Plocek  
William Houlihan  
Office of Cultural Affairs,  
Consulate General of Israel  
in New York  
\*Deborah Kaye  
Jane Kendall  
\*Joe Lanteri, New York City  
Dance Alliance Inc.  
Elaine & Howard Leventhal  
Martin & Rosanne Leshner  
Jayne Lipman & Robert Goodman  
Mark Litfman & Johnny Mendoza  
In Memory of John MacDonold  
Maria Mackey  
Uttara P. Marti  
Wendy McCain  
Joyce F. Menschel  
David & Diana Milich  
Jane & Michael Murphy  
Mutual of America Foundation  
Omomuki Foundation  
David Pastorski  
Warrie Price &  
James David Prince  
Berty P. & Michael H. Rauch  
Wes Schafer & Carlos Gallier  
Susan & Arnie Scharf  
Xiomara & Charles Scheidt  
Fran Schulman  
Robert A. Schulman  
Rena Shagan  
Alex & Wendy Stanton  
Mark Stevens & Mary Murphy  
Linda Stockhoff  
Marianna Vaidman Stone &  
Eric Stone  
Consulate General of Sweden  
in New York  
\*Temple St Clair LLC  
Susan Ulick  
Ms. Patricia E. Vance  
David E. Vogel  
Alexandra Wheeler & Rocky Rukan  
Irving & Elaine Wolbrom  
Ralph Womble & Ashley Edwards  
Billy F.B. Wong &  
Stephanie Gordon



## Leaders

### (\$1,000 and above)

Anonymous (10)  
Robert Allyn  
\*Neme Alperstein  
Gerald M. Appelstein  
Bank of America Merrill Lynch  
Kara Medoff Barnett &  
Dov Barnett  
Alison Baum  
Patricia Baxter  
\*Barbara Berliner & Sol Rymer  
Dorothy Black  
Kim Bleimann & Paola Duran  
Joe Bonnaud  
Nissan Boury  
Barbara & Gary Brandt  
Edward Brill  
Madeline Brine  
Matt Brodile  
Joanna Bueche  
\*Rachel Venner & Michael Byars  
Linda & Joseph Camardo  
Ann Chao  
Woody & Janice Collins  
\*Chris Coulthrust  
Caroline & Paul Cronson  
Charles T. Davis  
Barbara Dau  
Irene Rosner David,  
in Memory of Dr. Raphael David  
Jeffrey Davis & Jamie Alpert  
David H. De Weese & Anne Heller  
Ms. Beth Rudin DeWoody  
The Cory & Bob Donnalley  
Charitable Foundation  
The Donut Pub  
Jack & Eleanor Dunn  
Suzanne B. Engel  
Mr. Richard Erstad &  
Dr. Gladys Fenichel  
David L. Fanger &  
Martin Wechsler  
Erin Feeley-Nahem &  
Isaac Nahem  
Judy & Richard Feldstein  
\*Marion Ilene Fischer  
Maria Vittoria Foglia  
John and Janet Foord  
Judith Z. Friedman  
Peter C. Friedman  
Veronique Bogliolo Friedman &  
Mark Friedman  
\*Grace Frisone & Michael Metzger  
Ania Fryszkowska &  
Alex Louizos  
\*Tom & Nina Geller  
Barrie Gillies & William Drummy  
Susan Egbert Gilroy  
John Graney, MD  
Mason & Kim Granger  
Patric & Patricia Gregory  
\*Glen & Paula Günsal  
Ava Hamilton  
Alexandra L. Harper  
\*Shelia Heimbinder  
Dr. Elisabeth Hefti  
Laurie & Jack Helfin  
Janet L. Henner  
Edward Henry & Susan Monk  
Ellen Hirsch  
In Honor of the Weinroths  
Lynn Hopkins  
Gary Horowitz & Tom Wyse  
George C. Howell, III  
Mary & David Iles  
James B. Jacobs & Jan Sweeney  
Derek Johnson  
I. Michael Kadish  
Kenneth S. Kail & Ivy Hwang  
Margaret Kaplan  
Mr. Christian K. Keese  
\*Murray & Sylvana Klein  
Hans Koch  
Diana Korsh  
Kathy Krall  
Sondra Kurtin Robinson  
Susan Lampard  
LDJ Productions  
Reginald van Lee

Michael G. Lemle  
Rachel S. Levine  
Robert & Dorina Link  
\*Tina Liu  
David Lovett & Meg Ruley  
Sharon Luckman & Paul Shapiro  
Elizabeth A. Maher  
Joseph M. Marger  
Lynn C. Mautner  
Marcia Kramer Mayer  
\*Israel Meir & Steve Rivera  
\*Lorraine Meeker  
Miller Khoshkish Foundation  
Mr. Wayne & Mrs. Barbara Miller  
Michael Mulligan  
\*Judith Musiker  
Barbara Nagel  
Joyce O'Brien  
Aaron Singer and Bart Oosterveld  
Trisha Ostergaard  
David Parsons  
Peck Foundation, Milwaukee LTD  
Amy Pennington  
Doug & Teresa Peterson  
The Plimpton Shattuck Fund  
Douglas & Barbara Pitsch  
Judith Plows  
Carole Postal  
Donna & James Pressman  
David Alan &  
Susan Berkman Rahm  
\*Frances A. Resheske  
Case van Rij  
Philip W. Riskin  
Charitable Foundation  
Mary Jo Robertiello  
Ann Sahid Rosche  
Donald J. Rose &  
Victoria Lasdon Rose  
Ellen Rosen  
Diana & Michael Rothenberg  
Marilyn & Alan Rothsstein  
Gail Russell  
Deborah Sales & Ted Striggles  
Alessandro & Fe Saracino-Fendi  
Moshe Sasson  
Barbara & David Schimansky  
Jesse & Carol Schwartz  
Michael Sekus & Bianca Russo  
Irene Shen  
Joseph Smith & Leslie Hendrix  
Marilyn Sobel  
Leon Sokol  
Ellen Sorrin & David York  
Fran Sperling  
Mamie and Justin Stewart  
Roger Stoltz &  
Shauna Stoltz-Laurie  
Abbie M. Strassler  
William Sussman & Jane Steele  
Swedish Institute and the  
Swedish Embassy in Cuba  
Ken Tabachnick &  
Yael Mandelstam  
Gary Tannenbaum & Helen J. Mills  
Pamela van Zandt & Gina Gibney  
George Vanderploeg  
\*Lucy Vasserman &  
Brendan Finnegan  
Michael & Carol Weiss  
Elly Karp Wong  
Cooper Wright & Michael Marino  
Brann & Ellen Wry  
\*Zen & Barbara Yankovig  
\*Malin Yhr  
Carol Yorke & Gerard Conn  
Eloise Zeller  
Christian Zimmermann  
Bonnie Zamosky-Roth

## Investors

### (\$500 and above)

Anonymous (13)  
Donald R. Allen &  
Mildred Munich  
LaRue Allen &  
Ebony Washington  
Ellen Alpert  
Debra R. Anisman  
Maria Cristina Anzola

Lucie S. Archbold  
Paul Asman & Jill Lenoble  
Joan Brooks Baker &  
Margeaux Klein  
Betsy Barbanell  
Clay H. Barr  
Patricia Baxter  
Joan & Ira Berkowitz  
\*Maria M. Branco  
\*Dr. Andrea Brandon &  
Black Rubee  
Robert & Carol Braun  
\*Jonathan Brecht  
Jeffrey B. Bruce  
Carol Bryce Buchanan  
Diana Cagle  
Jennifer Kornreich Cahn &  
Andrew Cahn  
Susan Campbell  
Karen Carozza  
\*Nishka Chandrasoma  
Jason Chung  
\*Maciej Chociej  
Matthew C. Cluney  
\*Kenneth Cole &  
Maria Cuomo Cole  
Betsy Cornwall  
William Cosper  
Victoria Cowles  
Duke Dang & Charles E. Rosen  
\*Mary Craig  
\*Greg Darnieder  
Tony & Suzy Davis  
Duane Devries  
Deborah Domass  
Michael Eizenberg  
Robert Elder &  
Jacqueline Fox Elder  
David & Ingrid Ellen  
\*Melissa Elstein & Eric Katzman  
Judith & Walter Flamenbaum  
Dr. Sarah Fox &  
Mr. Steven Lochie  
Eileen & Cono Fusco  
Karen Gershowitz  
Elise Larrabure Girasole  
Geraldine Glassman  
Prof. James A. Glazier  
Virginia Gold  
Nita & Chuck Goodgal  
Katherine Goodman  
Lenore & Edward Grabowski  
Grant Family Charitable Fund  
Bruce Greenwald  
Charles & Carol Grossman  
Family Fund  
Jane Groveman  
Gina Harman  
Charles & Elaine Harris  
Ira Haupt, II  
\*Tali Herman  
Mr. Michael D. Herskovitz  
Elizabeth Levitt Hirsch  
Mr. Gregory Ho &  
Ms. Linda Sanchez  
Cheri Hoff  
Erica Hartman-Horvitz  
Ralph & Lynn Huber  
David H. Hughes, Jr.  
Laura J. Illich  
Walter Jaffe & Paul King  
Robert & Marcy Katz  
H. David Kaplan  
Jan S. Keithly  
Jennifer Alek Kenney  
Robert & Elaine Klein  
Valarie Koch  
Arthus & Jane Lane  
Stephen B. Lane  
Kenneth M. LeClair  
\*Rosanne Legrand  
Phyllis & Cary Lemkowitz  
Michael Lemle  
Elizabeth & Durwood Littlefield  
\*David Long  
Sophie Main  
Jennifer & Gideon Malherbe  
Julie Mandel Marcus  
Joseph M. Marger  
\*Jennifer Markowitz

Margaret Mastrianni  
William Mavrelis  
Douglas McCorkle  
Kati Meister  
Tanya Melich & Noel Silverman  
Victoria Morris  
Paula Moss  
Ann Mulally  
Deb Murnin  
Barry Nalebuff  
Drs. Benjamin Natelson &  
Gudrun Lange

Peter Nelson  
Genevieve Nestor  
Amanda Lee Neville  
\*The Carol & Melvin Newman  
Family Foundation

Stuart Nordheimer  
& Barbara Miller

Peter J. Occolowitz  
Katherine Ogg

Rachel Ostry, MD  
John Owen

Bob Ouimet  
The L.E. Phillips Family  
Foundation, Inc.

The Marshall Franklin Foundation

Brian Polovoy  
James & Deborah Purdon

Deborah A. Quirk  
Stephanie M. Goldson

& Stephen Rappaport  
Charles Ragland

Donald W. Roeske, Jr.  
Deborah Ronnen

Ellen Rosen  
\*Ellen & Mike Rosenberg

Jean M. Ross  
Elsa Ross-Greifinger

Anya Peterson Royce  
Jennifer Goodale & Mark Russell

Prince & Petar Sanders  
Dr. Carol Ann Sattler

In Memory of Tracy Scherman  
Marva & Florian Schodel

Lynn N. Schusterman  
Robert Score

Deborah Selch  
Elizabeth Shapiro

George Sheanshang  
\*Tara Sherman & Tony Weiss

Lindy Shuttleworth &  
Arthur Reichstetter

Edward Siegel  
Dr. Jorge Sigal

Rabbi Charles Simon  
Andrew & Jennifer Smith

Joan & Laurence Sorkin  
Jason Spiro

Michael Stanley  
Jessica E. Stack

William L. Stern  
Jim Stiles & Randy Bird

Robin Stout  
Helen Sullivan

Dr. Pavur R. Sundaresan  
Pamela Tatge

William Tomai &  
John Eric Sebesta

TPU Local One IATSE  
\*Dana Troetel &

George Papageorge  
Frank Troutman

Ellie Tweedy  
Thomas Van Winkle

Ernie Vickroy  
Merna Villarejo

Thomas Allen Walker  
Charles Walker

Louise Washer &  
Mary Clay Fields

Gregory Ward  
Sedgwick & Pamela Ward

Chris Watson  
Carol A. Weil

Kate Weil  
Sara Weinheimer

Stephen D. Weinstein

George S. Werner & Li Werner  
Tom Whelan

Gregory Youdan

### **Sponsors (\$300 and above)**

Anonymous (4)  
Patricia Adell

\*Fred & Sarah Allilaire  
Jane & Stephen Alpert

John Angiolillo, MD  
Elaine &

Theodosios Athanassiades  
Sherry & Sanford Axelband

Vivian Awner  
Elena Baum

Nilda Bayron-Resnick  
Joan & Ira Berkowitz

Roz Black & Bob Elmick  
Stan & Abby Bloch

Paul Brohan  
Leslie Buckland

Jim Bumgardner & Lou Tharp  
Deborah Burand

Anita Cabrera  
Michael & Jennifer Campagna

Kelli Carrol  
Neil & Kathleen Chrisman

Margaret Coady  
Eileen & Michael Cohen

Galois Cohen  
Richard & Mary Ann Cohen

Laurie Colahan  
Robert Conkey

Dr. Arturo &  
Ms. Caren Constantiner

Dr. & Mrs. Frederick Corio  
John Coulter

Mr. John A. Crawford III  
Judy Cunningham

Diana Davies  
Jacqueline Z. Davis

Mr. Anthony DePersia  
Dr. Susan Dicker

Rodney Durso  
Ms. Hope Eliasof

Jo Ann Engelhardt  
Ellen & Frank Estes

Martha Evenson &  
Daniel Hoffman

Trudy Festinger  
Jennifer Fitzpatrick

Ellen Fleysner  
Charles A. Forma

Ella M. Foshay &  
Michael B. Rothfeld

Roy Fowler  
\*Steven Fox

Stephanie French  
Barbara Futter

Mr. Maura Gaenzle  
Barbara Galloway

Loren Gesinsky & Judy Rudin  
Richard Gilden

Ronald Gilliam & Akram Héll  
Denyse Ginzberg

John D. Goldman  
Jennifer Goodale & Mark Russell

Mr. & Mrs. Richard D. Grant  
Susan E. Green

Lawrence W. Greene  
Sandra Gubin

Laurie Hart  
Eric Hemel & Barbara Morgen

George & Linda Hiltzik  
Herman &

Jacquelyn Heinemann  
Mrs. Ruth W. Heuman

\*Jerry Heymann  
\*Martha Evenson & Daniel Hoffman

Peter Holleran  
Huong Hoang

Susan Israel  
Sherrilyn Ifill

Ronald Jacquart  
Willie Johnson

Drew Reid Kerr  
Kenneth Silverman &

Carin Khatchikian  
Barbara Knox

Bond Koga  
Susan & Peter Kopple

Irene H. Lang  
Angela de Lara

Lawrence Levine  
\*Emanuel Lewis

Sukey Lilienthal  
Leslie Lin

Harold W. Low  
Peter Maiwald

Judy Mauer  
John & Linda Maxwell

Doug & Regina McCorkle  
Colleen McCourtney

Rodney McDaniel  
Cynthia Adler McKee

R. McNish  
Alan Mendelsohn

Carol and Frank Messineo  
Holly & William Mensching

Vincent Mirrione  
Richard J. Moylan

\*Mildred Munich  
\*Brigitte and Jeff Myhre

Aaron & Marcia Naveh  
Stephen A. Newman

Madeleine Nichols  
Anne & Harvey Nisselson

Jeffrey Nunn  
Phillip J. Pena

\*Marisa Anne Pierson  
Posner-Wallace Foundation

The Pulse Performing  
Arts Studio

Jonathan Raskin  
Dr. & Mrs. Robert Refowitz

Lan Rice  
Judith & Gary Richter

Barbara D. Riehl  
Eileen Robert

Susan M. Rosenberg  
Barbara S. Rosenthal

Lainie & John Ross  
Alan Russell

William H. Sadie  
Lies Sapp

Gregg Passin & Andy Schmidt  
Laura E. Schneider

\*Marva and Florian Schodel  
Sherry Barron-Seabrook

Mary & John Seward  
Rita Shawn

Kenneth Shelley  
Jennifer Shotwell

\*Elizabeth Sledge  
Anthony & Rosa Smith

Robin Smith & Bill Plante  
Martha Sherman

Robert & Curtis Spencer  
Margaret Stern

Jos Stumpe  
Henry & Jo Strouss

Mr. Lars Rosager &  
Mr. Donald Troise

Ms. Donna Tatso  
Pat Tafuro

Jennifer Tipton  
Margo Tohn

Tonic Physical Therapy  
& Wellness

Deirdre Towers  
Bruce Tredwell

Charles & Susan Tribbitt  
Dana A. Troetel

Patricia Truscelli  
Scott Votey

Dick & Carolyn Wallach  
Jeff Walsh

\*Irving & Marjorie Weiser  
\*Jeanette Williams

Doreen Wright  
Yelena Yerefsky

Peter Yorgin

*\* Denotes Joyce Rising Stars, The Joyce's new  
or increased donors.*

## The Rudolf Nureyev Prize for New Dance and Ballet Festival Commissions

*The Joyce Theater Foundation thanks the Rudolf Nureyev Dance Foundation for its invaluable partnership in commissioning new works from both established and emerging ballet companies, and enabling these companies to perform on the Joyce stage. The Joyce gratefully recognizes the donors listed below for their generous matching support that has made this effort possible.*

Rudolf Nureyev Dance Foundation  
R. Richard Ablon  
Deborah & Charles Adelman  
Gerald M. Appelstein  
Rob Ashford  
Stephen M. Baldini  
Theodore S. Bartwink  
The Harkness Foundation for Dance  
Mick Beekhuizen  
Evan Behrens & Dara Stern  
Ajay Bhandaram  
Torrence Boone  
Stephanie R. Breslow &  
Paul Watterson

Madeline Brine  
Richard & Martha Byrne  
Kerry Clayton & Paige Royer  
Rodney S. Cohen  
Alan & Chi Colberg  
Arlene Cooper  
Pamela Crutchfield  
Trisha & Patrick Duval  
Jamshid & Mahshid Ehsani  
Augie K. Fabela II  
Britton & Melina Fisher  
Kim Friedman  
J. Eric Gambrell  
Jane E. Goldberg  
Ronald Gumbaz & Juliet Cozzi  
David Haines  
John & Judith Hannan  
Rex S. Heinke  
Cecilia & Jim Herbert  
David & Andrea Holbrook  
Toni Hoover  
Kim Koopersmith  
Allen Kovac/  
Tenth Street Entertainment

Ronald & Stephanie Kramer  
Ronald S. Lauder  
Jim Leary  
Alec & Sarah Machiels  
Joyce F. Menschel  
David & Diana Milich  
Virginia & Timothy Millhiser  
Karyl Nairn  
Abby McCormick O'Neill

& Carroll Joynes  
Anh-Tuyet Nguyen  
& Robert Pollock  
Susan & Gregory Pappajohn  
Michèle & Steven Pesner  
Tatiana Piankova Foundation  
Betty P. & Michael H. Rauch  
Gregg Rechler/  
Lisa & Gregg Rechler  
Charitable Trust  
The Jerome Robbins Foundation  
Ann Sahid Rosche  
Meryl Rosofsky  
& Stuart H. Coleman  
Rowan Family Foundation Inc.  
Saul & Mary Sanders  
Fran Schulman  
Kathleen A. Scott  
Frederic & Robin Seegal  
Richard Shea  
Howard L. Shecter  
Linda Shelton  
Irene Shen  
Henry R. Silverman  
Susan Fawcett Sosin  
Allan Sperling & Ferne Goldberg  
Wendy & Alex Stanton  
Justin A. Stevens  
Raymond & Margaret Vandenberg  
Monica B. Voldstad  
Amit Wadhwany  
Daniel Walsh  
Stephen & Cathy Weinroth  
Steven M. Zagar  
Richard Kiehl &  
Christian Zimmermann

### The Young Leaders Circle

Kyle Abraham<sup>^</sup>  
Robert Allyn  
Patricia Arellano  
\*Rebecca Aronson  
Chellis Baird  
Erin Barnes  
Alison Baum  
Lisa Bonifacio  
Isabella Boylston<sup>^</sup>  
Camille A. Brown<sup>^</sup>  
\*Scott Caplan  
Victor M. Castillo &  
Blake Wiedenhoef  
Alejandro Cerrudo<sup>^</sup>  
\*Julia Chambers  
\*Nishka Chandrasoma  
Dr. Jason Chuang  
Mary Craig  
Debora Domass  
Michelle Dorrance<sup>^</sup>

Robert Fairchild<sup>^</sup>  
Davalois Fearon<sup>^</sup>  
Andrew & Claire-Marine Ferguson  
Erica Forrence  
\*Ania Fryszakowska  
Ronald Gilliam & Akram Héll  
Amita Goyal  
Jessica Halper  
Minglong Han  
Alexandra Harper, Co-Chair  
\*Emma Hood  
Kile Hotchkiss<sup>^</sup>  
Alixandra Hornyay, Co-Chair  
Audrey Hoursey  
Laura Hsu  
Krisen Irby  
Amanda Krusche  
Jean-François Kowalski  
Audrey Lam  
Debra Levin  
Stephanie Lichtinger  
Mitch Lowenthal  
Michelle K. Marck  
Katherine Maxwell<sup>^</sup>  
Sara Means<sup>^</sup>  
\*Katie Mues  
\*Leah Nelson  
\*Abigail Nintzel  
Justin Peck<sup>^</sup>  
Tiler Peck<sup>^</sup>  
\*Abigail Richards  
Vanessa Rojas  
Sethep San<sup>^</sup>  
Bette Ann Schlossberg, Co-Chair  
Danil Simkin<sup>^</sup>  
\*Madelyn Sirbu  
Elisa Smilovitz  
\*Margaret Stephens  
Evan Strain  
Mark & Oni Strawn  
Sara Strobe  
\*Myriam Varjacques  
\*Lucy Vasserman &  
Brendan Finnegan  
Alexander Wang  
Miss Inga Wells  
James Whiteside<sup>^</sup>  
Emma Winter  
\*LeeAna Wolfman  
\*Sangeeta Yesley  
\*Malin Yhr

<sup>^</sup>Artist Committee members to join The Joyce's Young Leaders Circle, please contact the Development office at 347-856-5828.

## JOYCE PROGRAMS ARE MADE POSSIBLE WITH PUBLIC FUNDS FROM:

The Joyce is supported in part by an American Rescue Plan Act grant from the National Endowment for the Arts to support general operating expenses in response to the COVID-19 pandemic.

Joyce programs are made possible by the National Endowment for the Arts; the New York State Council on the Arts with the support of the Office of the Governor and the New York State Legislature; and the New York City Department of Cultural Affairs, in partnership with the City Council with special thanks to Council Member Erik Bottcher.

NATIONAL  
ENDOWMENT  
for the ARTS  
arts.gov



## FACILITIES & SERVICES

Box Office (212-242-0800): Open Monday thru Sunday, 12pm - 6pm. On days when there is a performance, the box office is open through curtain time; advance sales stop ½ hour prior to curtain time (including matinees). Closed on major holidays. For Hearing Impaired call (TDD) 212-245-2904. To report Lost & Found items, please see an usher or call 212-691-9740.

### EMERGENCY RESUSCITATION EQUIPMENT

Resuscitation masks and latex gloves are located in the closet next to the drinking fountain in the Upper Lobby. AED is located downstairs in the reception area. LEARN CPR. For more information, contact the American Red Cross, the American Heart Association.

**FIRE NOTICE:** The exit indicated by a red light and sign nearest to the seat you occupy is the shortest route to the street. In the event of fire or other emergency, please walk – do not run – to that exit.

**WARNING:** The use of any recording device, either audio or video, and the taking of photographs, either with or without flash, is strictly prohibited within the auditorium. Violators will be punished with confiscation of recording device or ejection from the theater, and may be held liable for money damages.

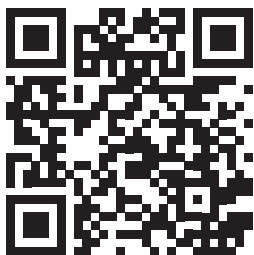


Photo by Ben McKeown

# LET'S BE FRIENDS!

---

From advance ticket access and the best seats at the best price to invited production rehearsals and tickets to artist receptions, **Friends of The Joyce** get perks year-round.



Want more perks? Scan the QR code or contact The Joyce Development office at 212-691-9740 x 381 or email [gobrien@joyce.org](mailto:gobrien@joyce.org).

