

PHOTO BY CHRISTOPHER DUGGAN



MARK MORRIS DANCE GROUP AND MUSIC ENSEMBLE:
THE LOOK OF LOVE

Friday and Saturday, April 14–15, 2023, at 7:30pm
Tryon Festival Theatre

PROGRAM

MARK MORRIS DANCE GROUP AND MUSIC ENSEMBLE:

THE LOOK OF LOVE

Mark Morris, *artistic director*

Nancy Umanoff, *executive director*

Music by Burt Bacharach

Lyrics by Hal David

Lyrics from "The Blob" by Mack David

Arranged by Ethan Iverson

Choreography by Mark Morris

Costume and production design by Isaac Mizrahi

Lighting design by Nicole Pearce

Costume associate, Marla Wonboy

MARK MORRIS DANCE GROUP

Jane Abbott, *understudy*

Mica Bernas

Karlie Budge

Brandon Cournay

Domingo Estrada, Jr.

Courtney Lopes

Taína Lyons

Matthew McLaughlin

Dallas McMurray

Brandon Randolph

Nicole Sabella

Christina Sahaida

Billy Smith

Noah Vinson

Malik Q. Williams

MMDG MUSIC ENSEMBLE

Marcy Harriell, *lead vocals*

Ethan Iverson, *piano*

Jonathan Finlayson, *trumpet*

Simón Willson, *bass*

Vinnie Sperrazza, *drums*

Clinton Curtis, *background
vocals*

Blaire Reinhard, *background
vocals*

This evening's program will be performed without an intermission.

OFFICIAL SPONSOR

**Bloomberg
Philanthropies**

The Look of Love is a production of the Mark Morris Dance Group; Krannert Center for the Performing Arts, University of Illinois Urbana-Champaign; BAM; BroadStage, Santa Monica; Cal Performances, UC Berkeley; The Jay and Susie Gogue Performing Arts Center at Auburn University; Hopkins Center for the Arts at Dartmouth in association with Arizona Arts Live, University of Arizona; Harriman-Jewell Series; The John F. Kennedy Center for the Performing Arts; Modlin Center for the Arts at University of Richmond; Moss Arts Center; Tennessee Performing Arts Center; UC Santa Barbara Arts & Lectures; and Virginia Arts Festival.

MARK MORRIS DANCE GROUP

THE LOOK OF LOVE

An Evening of Dance to the Music of BURT BACHARACH

Alfie
What the World Needs Now
I'll Never Fall in Love Again
Message to Michael
Raindrops Keep Falling on My Head
Do You Know the Way to San Jose
Anyone Who Had a Heart
Walk on By
Don't Make Me Over
Are You There (With Another Girl)
The Blob
Always Something There to Remind Me
The Look of Love
I Say a Little Prayer

Used by permission. All rights reserved.

THE LOOK OF LOVE DANCERS

Mica Bernas, Karlie Budge, Domingo Estrada, Jr., Courtney Lopes, Dallas McMurray,
Brandon Randolph, Nicole Sabella, Christina Sahaida, Billy Smith, Noah Vinson

Major support for the Mark Morris Dance Group provided by members of the **GRAND DUO CIRCLE** with annual gifts of \$12,000 or more. **HERO** \$500,000+ Elizabeth Amy Liebman. **LEADER** \$125,000–\$249,999 Bloomberg Philanthropies*, Judith R. and Alan H. Fishman*, The Howard Gilman Foundation*, Suzy Kellems Dominik. **STAR COLLABORATOR** \$50,000–\$124,999 Anonymous*, Adira Foundation*, The Beth and Ravenel Curry Foundation*, Dance/NYC's New York City Dance Rehearsal Space Subsidy Program, made possible by The Mellon Foundation*, Laurie M. Tisch Illumination Fund*, Meyer Sound Laboratories, Inc., The New York City Department of Cultural Affairs in Partnership with the City Council*. The New York State Council on the Arts with the support of the Office of the Governor and the New York State Legislature, PARC Foundation*, The Fan Fox & Leslie R. Samuels Foundation, The Shelby and Frederick Gans Foundation, The Shubert Foundation, Jane and R. L. Stine*. **STAR SPONSOR** \$25,000–\$49,999 Jody and John Arnhold, Billy Rose Foundation, Downtown Brooklyn + Dumbo Art Fund, a partnership with Downtown Brooklyn Partnership and Dumbo Improvement District as part of New York State's Downtown Revitalization Initiative, Bernard F. and Alva B. Gimbel Foundation, The Great Island Foundation, Jamie Gorelick and Richard Waldhorn*, John and Tommye Ireland (in memoriam)*, Isaac Mizrahi and Arnold Germer*, The SHS Foundation, David Resnicow and Diane Solway*. **STAR SUPPORTER** \$12,000–\$24,999 Robert Littman and Sully Bonnelly, Susan DeLong, The Gladys Krieble Delmas Foundation, Mrs. Candace and Dr. Vincent Gaudiani, Lynn Glaser*, York-Chi and Stephen Harder*, Manson Family and Stanley J. Wertheimer Fund Donors, Lucy Bowen McCauley, Kristine Morris*, Mark Morris, The National Endowment for the Arts, with special thanks to the Rolex Protégé Arts Initiative.

*Contributors who have generously pledged multi-year support for Mark Morris BOLD. Learn more about our BOLD initiatives and pledge your support at mmdg.org/bold

THANK YOU FOR SPONSORING THIS PERFORMANCE

With deep gratitude, Krannert Center thanks all 2022–23 Patron Sponsors and Corporate and Community Sponsors, and all those who have invested in Krannert Center. Please view their names later in this program and join us in thanking them for their support.

This event is supported by:



EDITH ANN STOTLER

Endowed Underwriter
Our university and community are so enriched by Krannert Center for the Performing Arts and the many opportunities it affords us.



DOLORIS DWYER

Krannert Center honors the memory of Endowed Sponsor Doloris Dwyer. Her love of the cultural arts lives on through her continuing support of the performing arts in our community. We acknowledge her generosity and passion.



JOAN & PETER HOOD

Endowed Co-sponsors
Twenty-six Previous Sponsorships
Five Current Sponsorships



GHAZALA AHMAD

One Previous Sponsorship
One Current Sponsorship



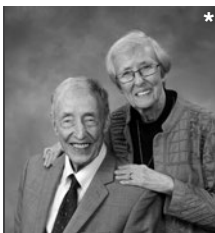
**TIMOTHY TEMPLE &
JERRY CARDEN**

Seven Previous Sponsorships
Two Current Sponsorships



**SALLIE & NORMAN
MILLER**

Three Previous Sponsorships
One Current Sponsorship



**CAROL & FRANKLIN
SHUPP**

Four Previous Sponsorships
Two Current Sponsorships



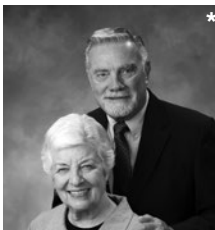
**NANCY & EDWARD
TEPPER**

Nineteen Previous Sponsorships
One Current Sponsorship



SARAH WIGLEY

One Previous Sponsorship
One Current Sponsorship



**KAREN & WILLIAM
WILKINSON**

Five Previous Sponsorships
Two Current Sponsorships



**CORPORATE &
COMMUNITY BRONZE
SPONSOR**

*PHOTO CREDIT: ILLINI STUDIO

PROFILES



MARK MORRIS was born on August 29, 1956, in Seattle, Washington, where he studied with Verla Flowers and Perry Brunson. In the early years of his career, he performed with the companies of Lar Lubovitch, Hannah Kahn, Laura Dean, Eliot Feld, and

the Koleda Balkan Dance Ensemble. He formed the Mark Morris Dance Group (MMDG) in 1980 and has since created over 150 works for the company. From 1988 to 1991, he was director of dance at Brussels' Théâtre Royal de la Monnaie, the national opera house of Belgium. In 1990, he founded the White Oak Dance Project with Mikhail Baryshnikov. Much in demand as a ballet choreographer, Morris has created 22 ballets since 1986 and his work has been performed by companies worldwide, including San Francisco Ballet, American Ballet Theatre, Ballet am Rhein, Dusseldorf, and the Royal New Zealand Ballet. Noted for his musicality, Morris has been described as "undeviating in his devotion to music" (*The New Yorker*). He began conducting performances for MMDG in 2006 and has since conducted at Tanglewood Music Center, Lincoln Center, and BAM (Brooklyn Academy of Music). He served as music director for the 2013 Ojai Music Festival. He also works extensively in opera, directing and choreographing productions for the Metropolitan Opera, New York City Opera, English National Opera, and The Royal Opera, Covent Garden, among others. He was named a fellow of the MacArthur Foundation in 1991 and has received 11 honorary doctorates to date. He has taught at the University of Washington, Princeton University, and

Tanglewood Music Center. He is a member of the American Academy of Arts and Sciences and the American Philosophical Society, and has served as an advisory board member for the Rolex Mentor and Protégé Arts Initiative. Morris has received the Samuel H. Scripps/American Dance Festival Award for Lifetime Achievement, the Leonard Bernstein Lifetime Achievement Award for the Elevation of Music in Society, the Benjamin Franklin Laureate Prize for Creativity, the International Society for the Performing Arts' Distinguished Artist Award, Cal Performances Award of Distinction in the Performing Arts, the Orchestra of St. Luke's Gift of Music Award, and the 2016 Doris Duke Artist Award. In 2015, Morris was inducted into the Mr. and Mrs. Cornelius Vanderbilt Whitney Hall of Fame at the National Museum of Dance in Saratoga Springs, New York. Morris opened the Mark Morris Dance Center in Brooklyn, New York, in 2001 to provide a home for his company, subsidized rental space for local artists, community education programs for children and seniors, and a school offering dance classes to students of all ages and levels of experience with and without disabilities. Morris's memoir, *Out Loud*, co-written with Wesley Stace, was published in paperback by Penguin Press in October 2021.

The **MARK MORRIS DANCE GROUP** was formed in 1980 and gave its first performance that year in New York City. The company's touring schedule steadily expanded to include cities in the United States and around the world, and in 1986 it made its first national television program for the PBS series *Dance in America*. In 1988, MMDG was invited to become the national dance company of Belgium and spent three years in residence at the Théâtre Royal de la Monnaie in Brussels. The Dance Group returned to the United States in 1991 as one of the world's leading dance companies. Based in Brooklyn, New York, MMDG maintains strong ties to presenters in several cities around the world, most notably to its West Coast home, Cal Performances in Berkeley, California, and its Midwest home, the Krannert Center for the Performing Arts at the University of Illinois Urbana-Champaign. MMDG also appears regularly in New York, Boston, Seattle, and Fairfax. In New York, the company has performed at New York City Center's Fall for Dance Festival, regularly performs at Lincoln Center for the Performing Arts's Mostly Mozart and White Light Festivals, and collaborates yearly with BAM on performances and master classes. From the company's many London seasons, it has received two Laurence Olivier Awards and a Critics' Circle Dance Award for Best Foreign Dance Company. Reflecting Morris's commitment to live music, the Dance Group has featured live musicians in every performance since the formation of the MMDG Music Ensemble in 1996. MMDG regularly collaborates with renowned musicians, including cellist Yo-Yo Ma, pianist Emanuel Ax, mezzo-soprano Stephanie Blythe, and jazz trio The Bad Plus, as well as leading orchestras and opera companies, including the

Metropolitan Opera, English National Opera, and the London Symphony Orchestra. MMDG frequently works with distinguished artists and designers, including painters Robert Bordo and the late Howard Hodgkin, set designers Adrienne Lobel and Allen Moyer, costume designers Martin Pakledinaz and Isaac Mizrahi, and many others. MMDG's film and television projects include *Dido and Aeneas*, *The Hard Nut*, *Falling Down Stairs*, two documentaries for the UK's *South Bank Show*, and PBS's *Live from Lincoln Center*. In 2015, Morris's signature work *L'Allegro, il Penseroso ed il Moderato* had its national television premiere on PBS's *Great Performances*. While on tour the Dance Group partners with local cultural institutions and community organizations to present arts and humanities-based activities for people of all ages and abilities.

The **MMDG MUSIC ENSEMBLE**, formed in 1996, is integral to the Dance Group. "With the dancers come the musicians...and what a difference it makes." (*Classical Voice of North Carolina*). The Ensemble's repertory ranges from 17th and 18th century works by John Wilson and Henry Purcell to more recent scores by Ethan Iverson, Lou Harrison, and Henry Cowell. The musicians also participate in the Dance Group's educational and community programming at home and on tour. The Music Ensemble is led by Colin Fowler, who began to collaborate with MMDG in 2005 during the creation of *Mozart Dances*.

Follow and tag us on Facebook, Twitter, and Instagram @markmorrisdance

To learn more about our work and programs, please visit mmdg.org



BURT BACHARACH

(1928–2023) was one of the world's most acclaimed, award-winning composer/songwriters. His music is as diverse as his audiences, spanning generations and continents, as he is celebrated both as a pop

culture icon and one of the world's greatest contemporary composers. Bacharach's credits read like the world's favorite radio stations' playlist: "Alfie," "Arthur's Theme," "Close to You," "Do You Know the Way to San Jose," "I Say a Little Prayer," "I'll Never Fall in Love Again," "This Guy's in Love With You," "Walk On By," "What the World Needs Now is Love," and "Wishin' and Hopin'" are among just the 48 top ten hits and nine #1 songs. Bacharach and Hal David were the recipients of the 2012 Library of Congress Gershwin Prize for Popular Song. The prize is awarded to musicians whose lifetime contributions in the field of popular song exemplify the standard of excellence associated with the Gershwins. Bacharach and David received the Library's Gershwin Medal in May 2012 at an all-star tribute in Washington, DC. Bacharach's memoir, *Anyone Who Had a Heart*, was released in May 2013. For the first time in his long and astonishing career, Bacharach told his story of love, heartbreak, success, failure, and unbridled ambition in *Anyone Who Had a Heart*, which is named after one of many songs Bacharach and David wrote for Dionne Warwick. The memoir was published by HarperCollins. Bacharach composed his first film score in 16 years for John Asher's autism-based drama film *Po*. The film was released in April 2016. *Po* tells the story of a recently widowed father struggling to raise his 10-year-old son who has autism. Bacharach and Daniel Tashian released two new songs called "Moon Over Wichita"

and "Heartbreak Storms" via Big Yellow Dog Music in April 2022. The songs are a continuation of their Grammy-nominated *Blue Umbrella* EP, released in 2020, and *Blue Umbrella (The Complete Recordings)*, which was released in 2021 and featured four never-before-heard songs. Bacharach and Steven Sater's *Some Lovers*, featuring vocal performances from some of Broadway's most beloved co-stars, was released on November 26, 2021. The album was nominated for a Grammy Award for Best Musical Theater Album.



HAL DAVID (1921–2012) is known for his award-winning lyrics that have been featured in films, Broadway shows, and music charts throughout his career. Being honored through numerous Grammys, the NARM Presidential Award, and more, he is most known

for his collaborations with composer Burt Bacharach, whom he met in 1957. The two wrote their first hit, "The Story of My Life," and then continued to write iconic American pop songs throughout the 1960s and 70s. In 2012, David and Bacharach received the Gershwin Prize for Popular Song. But the duo was not just known for the pop songs they created. They also wrote for movies, with four of their songs being nominated for Academy Awards: "What's New, Pussycat?," "Alfie," "The Look of Love," and "Raindrops Keep Fallin' on My Head." "Raindrops Keep Fallin' on My Head" also won an Oscar in 1970. Lincoln College bestowed a doctor of music degree on David for his contribution to American music. In October 2007, David received an honorary degree from the Five Towns College in Long Island, and, in addition, they named their new music library building the Hal David Music Library. David is a member of the Nashville Songwriters

Hall of Fame and was the first non-British person to receive the Ivor Novello Award from the British Performing Rights Society.



Pianist, composer, and writer **ETHAN IVERSON** (arranger, piano) first came to international prominence as a founding member of The Bad Plus, a game-changing collective with Reid Anderson and David King. *The New York Times* called TBP “Better than

anyone at melding the sensibilities of post-60’s jazz and indie rock.” During his 17-year tenure, TBP performed in venues as diverse as the Village Vanguard, Carnegie Hall, and Bonnaroo; collaborated with Joshua Redman, Bill Frisell, and the Mark Morris Dance Group; and created a faithful arrangement of Igor Stravinsky’s *The Rite of Spring* and a radical reinvention of Ornette Coleman’s *Science Fiction*. Since leaving TBP, Iverson has kept busy. In 2017, he co-curated a major centennial celebration of Thelonious Monk at Duke University and premiered the evening-length *Pepperland* with the Mark Morris Dance Group. In 2018, he premiered an original piano concerto with the American Composers Orchestra and released a duo album of new compositions with Mark Turner on ECM. In 2019, he released *Common Practice* with Tom Harrell on ECM, standards tracked live at the Village Vanguard. In 2021, he released the big band work *Bud Powell in the 21st Century* and was featured on the March cover of *DownBeat*. In 2022, he released *Every Note Is True* on Blue Note records, an album of original music with Larry Grenadier and Jack DeJohnette. Iverson has also been in the critically-acclaimed Billy Hart Quartet for well over a decade and occasionally performs with elder statesmen like Albert “Tootie” Heath or Ron Carter or collaborates with noted classical

musicians like Miranda Cuckson and Mark Padmore. For almost 20 years, Iverson’s website Do the Math has been a repository of musician-to-musician interviews and analysis. *Time Out New York* selected Iverson as one of 25 essential New York jazz icons: “Perhaps NYC’s most thoughtful and passionate student of jazz tradition—the most admirable sort of artist-scholar.” Iverson has also published articles about music in *The New Yorker*, NPR, *The Nation*, and *JazzTimes*.



ISAAC MIZRAHI (costume and production design) has worked extensively in the entertainment industry as a performer, host, writer, designer, and producer for over 30 years. He has an annual residency at Café Carlyle in New York City and

has performed at various venues across the country such as Joe’s Pub, The Regency Ballroom, and several City Winery locations nationwide. *The New York Times* noted, “he qualifies as a founding father of a genre that fuses performance art, music, and stand-up comedy.” He is the subject and co-creator of *Unzipped*, a documentary following the making of his fall 1994 collection which received an award at the Sundance Film Festival. He hosted his own television talk show *The Isaac Mizrahi Show* for seven years, has written three books, and has made countless appearances in movies and on television. He served as a judge on *Project Runway: All-Stars* for the series’ entire seven-season run. Mizrahi has directed productions of *A Little Night Music* and *The Magic Flute* for the Opera Theatre of St. Louis. Annually, he directs and narrates his production of the children’s classic *Peter and the Wolf* at the Guggenheim Museum in New York. Mizrahi has his own

production company, Isaac Mizrahi Entertainment, under which he has several projects in development in television, theatre, and literature. His *New York Times* bestselling memoir, *I.M.*, was published in February 2019.



NICOLE PEARCE (lighting design) is a multidisciplinary artist living in Queens, New York. Her work has been seen across the United States, Cuba, England, Germany, Japan, Korea, Italy, New Zealand, and Russia. *The New York Times* has stated:

“The glow of Nicole Pearce’s lighting on center stage creates a feeling of magic, as if the dancers are circling an unseen grail.” Selected dance credits include work with Alvin Ailey American Dance Theater, American Ballet Theater, Atlanta Ballet, Dance Heginbotham, Dance Theater of Harlem, Gallim, Houston Ballet, Hubbard Street, Joffrey Ballet, Malpas, Mark Morris Dance Group, Nederlands Dance Theater, and New York City Ballet. Selected theater and opera credits includes work with Arena Stage, Arizona Opera, Hartford Stage, Long Wharf Theater, McCarter Theater, Minnesota Opera, The Play Company, The Playwrights Realm, Philadelphia Theater Company, Opera Montreal, and Pittsburgh Public Theater. Her installation of 1,000 paintings entitled *Tiny Paintings for Big Hearts* is open to doctors, nurses, staff, and patients of Elmhurst Hospital in Elmhurst, New York. (@nicolepearceart / www.nicolepearcedesign.com)

COLIN FOWLER (music director) began his musical study at the age of five in Kansas City and went on to study at the prestigious Interlochen Arts Academy. He continued his education at The Juilliard School, where he received his bachelor of music in 2003 and his master of music in



2005. While at Juilliard, he studied piano with Abbey Simon, organ with Gerre Hancock and Paul Jacobs, harpsichord with Lionel Party, and conducting with James dePriest and Judith Clurman. A versatile musician and conductor, Fowler works in

many areas of the music scene in New York City. He is a veteran of numerous Broadway shows, most recently performing in the Tony Award-winning musical *Jersey Boys*. A seasoned church musician, Fowler has led services at numerous houses of worship, including Trinity Wall Street, St. Thomas Church, Marble Collegiate Church, and Park Avenue Synagogue. As a classical soloist and collaborative artist, he has performed and recorded with many world-renowned musicians and ensembles, including Deborah Voigt and the Los Angeles Philharmonic. He began to collaborate with the Mark Morris Dance Group in 2005 and has since then performed over 40 pieces with the company on almost every keyboard instrument possible, including the harmonium and toy piano, and has conducted performances of *Mozart Dances*, *Acis and Galatea*, *The Hard Nut* and *L’Allegro, il Penseroso ed il Moderato*. Praised by *The New York Times* as “invaluable” and “central to Morris’ music,” he was appointed music director in 2013.



SAM BLACK (company director) is originally from Berkeley, California, and received his BFA in dance from SUNY Purchase. He first appeared with MMDG in 2005 and danced with the company until 2019, when he became the rehearsal director. He was

promoted to company director in 2021.



JANE ABBOTT is a New York native who spent her early years training at the Alvin Ailey Scholarship Program and The School at Jacob's Pillow. She graduated in 2018 with a BA in dance from Columbia University, where she had the opportunity to perform works

by Mark Morris, Chase Brock, Trisha Brown, John Heginbotham, Caitlin Trainor, and Twyla Tharp. She is a proud member of the Chase Brock Experience, with whom she has performed in multiple Off-Broadway productions, including the revival of *The Four Seasons* as well as in the original casts of *The Girl with the Alkaline Eyes* and *Big Shot*—the latter of which she also worked on as the associate choreographer and dance captain. Additional favorite credits include: *The Hard Nut* and *L'Allegro, il Penseroso ed il Moderato* with MMDG, *Diavolo: Architecture in Motion*, General Mischief Dance Theater, Olivia Palacios Dance, North Shore Music Theater, The Joyce Theater, and the Fire Island Dance Festival. She wishes to thank her incredible parents for the endless support, inspiration, and love.



MICA BERNAS, originally from Manila, Philippines, received her training at the Cultural Center of the Philippines Dance School. She later joined Ballet Philippines as a member of the corps de ballet and rose up the ranks to soloist. While at Ballet

Philippines, she also studied at De La Salle University and graduated with a bachelor's degree in organizational communication in 2006. Upon graduating, she moved to New York and joined Carolyn Dorfman Dance. She was a guest artist with the Limón Dance Company and worked

with Karole Armitage, Gallim Dance, Marta Renzi, and Connecticut Ballet. As an educator, she has taught all levels of dance, including after school programs, pre-professional, and master classes. She has taught at the Limón Institute and formerly ran the dance program at BIMA at Brandeis University. She joined MMDG as a company member in 2017.



KARLIE BUDGE grew up in Knoxville, Tennessee, training and performing with the Tennessee Children's Dance Ensemble. She attended Case Western Reserve University on a full scholarship from the department of dance, graduating magna cum laude

with a BA in dance and a BS in statistics in 2016. Budge has performed with Graham 2, Merce Cunningham Trust, and in her own solo and duet choreography. Budge joined MMDG as an apprentice in September 2018 and became a company member in November 2019.



BRANDON COUNRAY is originally from Walled Lake, Michigan, and received his BFA from The Juilliard School. As a freelance artist, he has performed with the Radio City Christmas Spectacular, the Mark Morris Dance Group, Morphoses, the Metropolitan

Opera, New York Theatre Ballet, The Chase Brock Experience, Schoen Movement Company, Dance Heginbotham, and KEIGWIN + COMPANY. TV/film/industrial credits include PBS's *Great Performances*, *Musical Chairs* (HBO), *Puma*, *Sesame Street*, and Target. As an educator and répétiteur, he has worked with the Pennsylvania Ballet, Whim W'Him, The Juilliard School/Nord

Anglia Education, and universities nationwide. Offstage, he has worked with companies in multiple capacities from artistic direction to administrative management. For many years, he was the rehearsal director and associate artistic director of KEIGWIN + COMPANY. In addition, he has assisted numerous choreographers on creative projects in theatre, film, and dance. He joined MMDG as a company member in 2018.



CLINTON CURTIS

(background vocals) is a multi-genre singer, musician, and songwriter originally from Key West, Florida. As a choral singer he has worked with many of the world's luminary conductors and orchestras, most recently including

engagements with the New York Philharmonic, Berlin Philharmonic, and San Francisco Symphony. March 2016 marked his operatic debut in *Curlew River* for the Mark Morris Dance Group. As a popular songwriter and frontman for the Clinton Curtis Band, he has toured internationally as a cultural ambassador with the US Department of State. He has released five original studio albums available at music.clintoncurtis.com.



DOMINGO ESTRADA, JR.,

a native of Victoria, Texas, studied martial arts and earned his black belt in 1994. He danced ballet folklórico through his church for 11 years. Estrada earned his BFA in ballet and modern dance from Texas Christian University

and had the honor of working with the late Fernando Bujones. During his undergraduate studies, he attended the American Dance Festival where he had the privilege of performing

Skylight, a classic work by choreographer Laura Dean. He debuted with MMDG in 2007 and became a company member in 2009. Estrada would like to thank God, his family, and all who support his passion.



JONATHAN FINLAYSON

(trumpet) is an accomplished trumpeter, composer, and band leader. Named a rising star by *DownBeat* magazine, Finlayson has been an integral part of the creative music scene in New York since relocating in 2000. He is

widely admired for his ability to negotiate cutting-edge material while bringing a strong sense of individuality and verve. Finlayson has garnered critical acclaim and recognition for his three recordings as a leader with his group Sicilian Defense. He has also received much recognition for his contributions as a sideman with cutting-edge artists such as Steve Coleman, Henry Threadgill, Steve Lehman, and Mary Halvorson.



MARCY HARRIELL (lead vocals) is a singer, actress, and designer. Music was as mandatory as air for the daughter of a truck-driving trumpeter and a gardening artist. In her childhood home, she delighted in drilling arias while jazz greats played in the

background. Her ability to passionately embrace diverse vocal styles has made her a standout in New York theatre. Jumping lithely amongst opera, rock, jazz, and R&B, *The New York Times* recently hailed her as a vocalist who "demolishes the furious torch song" with a "rafter-rattling intensity." Broadway star turns include Tony

Award-winning musicals *In the Heights*, *Rent*, and her nightly showstopping performance in *Lennon*, where the *New York Post* declared this “wildcat kitten” a “star in the making.” Throughout her career, she has had the honor to work with numerous industry legends: Stephen Sondheim, who guided her performance of Marta in *Company* at Lincoln Center and the Kennedy Center; Athol Fugard, who directed her in the world premiere of his play *Sorrows & Rejoicings*; Jerome Robbins and Arthur Laurents, under whose masterful supervision Harriell deepened the role of Maria in *West Side Story*. “Superfriend” Lin-Manuel Miranda recruited her to record early demos for Disney’s *Moana*, tapping Harriell’s emotional interpretations for the soundtrack. Enamored by another interpretation, Quentin Tarantino wrote the role of Marcy for her in his film *Death Proof*. On the small screen, Harriell has been a series regular on NBC’s *Ed*; HBO’s *Nurse Jackie*; CBS’s *Queens Supreme*; and has guest starred in numerous episodics, including *Manifest*, *NCIS*, *Law & Order*, and *Search Party*. When she’s not onstage, onscreen, or in-studio, Harriell takes a happy audience on a colorful ride alongside her husband Rob in the hit YouTube series *@TheHandmadeHarriells*, creating couture garments for everyday life. In fact, she’ll be wearing one of her creations tonight. (@marcyharriell/thehandmadeharriells.com)



COURTNEY LOPES is originally from Bermuda and attended the University of North Carolina School of the Arts for her high school education. She graduated magna cum laude with a BFA in dance from SUNY Purchase in 2012 and studied in Taiwan

at the Taipei National University of the Arts. As a student, she performed works by Paul Taylor,

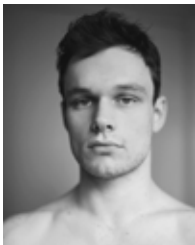
Jessica Lang, Lar Lubovitch, and Huang Yi of Cloud Gate Dance Theater. In addition to performing with Dance Heginbotham for over nine years, she has worked as a freelance artist with Megan Williams, Sameena Mitta, Kathryn Alter, Sue Bernhard, and Robert Mark Burke. As an educator and répétiteur, she has worked with the Mason Gross School of the Arts at Rutgers University, Ballet Tech, 92Y Harkness Dance Center, Dance for PD®, and the José Limón Institute. She first performed with MMDG in 2018 and became a company member in 2023.



TAÍNA LYONS is a San Pedro, California native who began her dance training at the San Pedro Ballet School at the age of four. Her professional dance training started at the Debbie Allen Dance Academy, eventually being mentored by Debbie Allen herself. She

graduated from New York University’s Tisch School of the Arts with a BFA in dance and a minor in Spanish in 2020. There she performed in guest works by Ronald K. Brown, Wayne McGregor, and Lar Lubovitch. In the spring of 2019, she also had the pleasure of studying abroad at the Academy of Performing Arts in Prague, Czech Republic. Since graduating, she has had the honor of being a founding member of the Limón Dance Company’s Limón2 (L2) company, an apprentice with Ronald K. Brown’s Evidence, as well as performing and touring with Kyle Marshall Choreography. She joined MMDG as a company member in 2022.

MATTHEW McLAUGHLIN discovered movement at age one and danced hula in Hawaii until age four. As a child with parents in the military, he moved and traveled frequently and explored many different sports and art forms. He



graduated from SUNY Purchase with a BFA in dance. During this time, he performed works by Aszure Barton, Kevin Wynn, Kyle Abraham, George Balanchine, and Doug Varone. In 2018, he had the opportunity to perform in the Lar Lubovitch

Dance Company's 50th anniversary celebration. He joined MMDG as an apprentice in 2019 and became a company member in 2021. McLaughlin would like to thank his family for their love and inspiration.



DALLAS McMURRAY, from El Cerrito, California, began dancing at age four, studying jazz, tap, and acrobatics with Katie Maltsberger and ballet with Yukiko Sakakura. He received a BFA in dance from the California Institute of the Arts. McMurray performed

with the Limón Dance Company in addition to works by Jiří Kylián, Alonzo King, Robert Moses, and Colin Connor. McMurray performed with MMDG as an apprentice in 2006 and became a company member in 2007.



BRANDON RANDOLPH began his training with the School of Carolina Ballet Theater in Greenville, South Carolina, under the direction of Hernan Justo. At age 14, he was accepted into the South Carolina Governor's School for the Arts and Humanities,

where he studied with Stanislav Issaev and Bobby Barnett. Randolph received his BFA in dance from Purchase College in 2012. There he had the

opportunity to perform with Dance Heginbotham as well as repertory by Stephen Petronio, Lar Lubovitch, Paul Taylor, and George Balanchine. Randolph began working with MMDG in 2013 and became a company member in 2014.



BLAIRE REINHARD

(background vocals) is thrilled to be joining the MMDG Music Ensemble in *The Look of Love*. Her voice and original compositions have been featured in hundreds of TV shows, films, radio spots, and commercials, with credits

including *Feel the Beat*, *So You Think You Can Dance*, *The Friend*, *Inside Amy Schumer*, *Dance Moms*, *The Young and the Restless*, *One Life to Live*, *Lincoln Heights*, *The Voice*, *Silver Bells*, *High School Musical*, *The Namesake*, *Cow Belles*, and *The Merry Gentleman*. She has also worked as music supervisor on series including *Younger* and *Chappelle's Show*. For over a decade, she has managed and directed the Blaire Reinhard Band, performing as lead vocalist and keyboardist at events around the greater New York City area (blaireband.com).



NICOLE SABELLA is originally from Clearwater, Florida, where she studied at the Academy of Ballet Arts and the Pinellas County Center for the Arts at Gibbs High School under Suzanne B. Pomerantzeff. In 2009, she graduated from the University

of the Arts in Philadelphia, Pennsylvania, earning her BFA in modern dance performance and the "Outstanding Performance in Modern Dance" Award. She was a performer with Zane Booker's *Smoke*, *Lilies*, and *Jade Arts Initiative*. Sabella first

performed with MMDG in 2013 and became a company member in 2015.



CHRISTINA SAHAIDA grew up in Pittsburgh, Pennsylvania, and began her early dance training at the Pittsburgh Ballet Theatre School. In 2012, she graduated with honors from Butler University, receiving a BFA in dance performance. She has worked

with Ballet Quad Cities, Texture Contemporary Ballet, and most recently the Big Muddy Dance Company in St. Louis, Missouri. Sahaida joined MMDG as an apprentice in 2017 and became a company member in 2019.



BILLY SMITH grew up in Fredericksburg, Virginia, and attended George Mason University under a full academic and dance talent scholarship. He graduated magna cum laude in 2007 and received achievement awards in performance, choreography,

and academic endeavors. While at George Mason, he performed the works of Mark Morris, Paul Taylor, Lar Lubovitch, Doug Varone, Daniel Ezralow, Larry Keigwin, Susan Marshall, and Susan Shields. Smith's own piece, *3-Way Stop*, was selected to open the 2006 American College Dance Festival Gala at Ohio State University, and his original choreography for a production of *Bye Bye Birdie* garnered much critical praise. An actor as well, Smith's regional theater credits include Tulsa in *Gypsy*, Mistoffelees in *CATS*, and Dream Curly in *Oklahoma!* Smith danced with Parsons Dance from 2007–2010. He joined MMDG as a company member in 2010.



VINNIE SPERRAZZA (drums) is a Brooklyn-based jazz drummer. He has made a mark on the New York jazz community with his swinging, enthusiastic playing and his commitment to original projects. He has released three full-length albums of his

original compositions for Loyal Label and Positone Records. In 2023, he will release a trio album with pianist Ethan Iverson and bassist Michael Formanek, and a new suite of music composed for a group with guitarist Brandon Seabrook and saxophonist Loren Stillman. Additionally, he has played on over 80 albums as a sideman. Notable recent touring has been with saxophonist and composer Ohad Talmor's *Subway Lines*; Stew and Heidi Rodewald in Stew and The Negro Problem; the Mark Morris Dance Group's *Pepperland*, composed and led by Ethan Iverson; the Michael Formanek Drome Trio, featuring new extended compositions by Michael Formanek; and the jazz collective Ember, featuring saxophonist Caleb Curtis and bassist Noah Garabedian. He is a member of the Hank Roberts Sextet and Hank Roberts Trio, and tours and records with the groups Landline, the Choir Invisible, Ember featuring Orrin Evans, Matt Bauder's Hearing Things, Vinnie Sperrazza–Jacob Sacks–Masa Kamaguchi *PLAY*, and *trioTrio meets Shelia Jordan*.



NOAH VINSON is originally from Springfield, Illinois, and received his BA in dance from Columbia College Chicago. He was named a *Dance Magazine* "Dancer on the Rise" in 2009 and assisted Mark Morris in the creation of *The Letter V* for Houston Ballet. He began

dancing with MMDG in 2002 and became a company member in 2004.



MALIK Q. WILLIAMS is a native of Pittsburgh, Pennsylvania, and was awarded the Lynn Swann Scholarship to attend the Pittsburgh Ballet Theatre during the 2006–2007 season. He graduated from the Alexander W. Dreyfoos School

of the Arts in West Palm Beach, Florida, as a dance major in 2013, where he worked with Troy Powell, Christopher L. Huggins, Billy Bell, and Margo Sappington. He then went on to The Juilliard School, where he graduated with a BFA in 2017 under the direction of Lawrence Rhodes. At Juilliard, he worked with the choreographers Takehiro Ueyama, Loni Landon, Zvi Gotheiner, Matthew Neenan, and Gention Doda. He has performed works by Martha Graham, Paul Taylor, and Nacho Duato. Since graduating, Williams has danced with the Limón Dance Company, National Dance Company of Wales, and Lydia Johnson Dance. During this time, he has performed works by José Limón, Caroline Finn, Yin Yue, Caitlin Javech, and Lydia Johnson, among many others. He joined MMDG as an apprentice in 2020 and became a company member in 2021.



SIMÓN WILLSON (bass) is a Chilean-born, New York City-based bassist, composer, and improviser. As an eclectic and in-demand sideman, he has toured with a host of different artists in Europe, the United States, Canada, and South America. His wide-

ranging interest in different realms of jazz and improvised music has led him to work with a

diverse pool of established artists such as Dave Douglas, Ethan Iverson, Steve Cardenas, George Garzone, Jason Palmer, Rodney Green, Michael Blake, Pablo Held, Jim Black, Tim Miller, and Frank Carlberg, among many others. He also plays in bands of contemporaries such as Kevin Sun, Max Light, and Jacob Shulman. In addition to his sideman work, he co-leads the bands Great on Paper, Family Plan, and Earprint. The latter won the “best debut album” category of the NPR Music Jazz Critics Poll in 2016, and Family Plan released their debut album in September 2021, due to receiving a generous grant from the Chilean government. Willson can be heard on over 25 records for labels such as Tzadik, Steeplechase, Newvelle, and Endectomorph, in addition to a number of self-releases.

MARK MORRIS DANCE GROUP STAFF

Artistic Director

Mark Morris

Executive Director

Nancy Umanoff

PRODUCTION**Director of Technical Production**

Johan Henckens

Lighting Supervisor

Mike Faba

Audio Supervisor

Carl Lund

Costume Coordinator

Stephanie Sleeper

Wardrobe Supervisor

Amy Page

ARTISTIC**Director of Artistic Engagement**

Jen Rossi

Company Director

Sam Black

Music Director

Colin Fowler

Company Manager

Julia Weber

Ballet Licensing

Tina Fehlandt

Archivist

Stephanie Neel

Processing Archivist

Justin Han

ADMINISTRATION**Chief Financial Officer**

Elizabeth Fox

Finance and Budget Manager

Chris Pritchard

Payroll Specialist

Candace Leslie

Finance Associate

Jillian Marzziotti

Administrative Assistant

Allison Antoinette Bailey

DEVELOPMENT**Director of Development**

Michelle Amador

Institutional Giving Manager

Haley Mason Andres

Individual Giving Coordinator, Partners

Lauren Grant

Individual Giving Coordinator, Friends

Zubaydah Bashir

Data Entry Assistant

Rima Yamazaki

Grants Assistant

Leilani Douglas

MARKETING**Director of Marketing and Communications**

Laura Giannatempo

Marketing and Communications Manager

Tara Treffiletti

Creative Content and Editorial Manager

Trevor Izzo

Marketing and Digital Engagement Associate

Yingru Huang

Marketing Assistant

Mara Cohen

Marketing Intern

Ruth Montoya

**EDUCATION AND COMMUNITY
ENGAGEMENT****Director of Education and Community
Engagement**

Sarah Marcus

Youth and Family Programs Director

Alexandra Cook

Adult Programs Director

Bianca Golden

Adult Programs Coordinator

Kyara Mahlen

School Administrator

Lily Khan

Community Education Programs Manager

Calvin A. Rollins II

Student Company Rehearsal Manager

Amy Ashley

Dance for PD® Program Director

David Leventhal

**Dance for PD® Programs and Engagement
Manager**

Maria Portman Kelly

Dance for PD® Managing Director

Eva Nichols

Dance for PD® Programs Assistant

Amy Bauman

Dance for PD® Programs Administrator

Randy Miles

Dance for PD® Programs Coordinator

Ummkhair Brown

DANCE CENTER OPERATIONS**Director of Dance Center Operations**

Elise Gaugert

Studio Manager

Tiffany McCue-Frenzel

Events and Dance Center Operations Manager

Henry Lombino

Associate Director of Visitor Services

Alex Irish

Operations Coordinator

Lou Rasse

Visitor Services Assistants

McCall Atkinson, Emma Sarah Davis, Essence Edwards, Emily Arden Jones, Al Parker, Chelsea Rose, Tashae Udo

Director of Facilities and Capital Projects

Mark Sacks

Maintenance

Darrell Jordan, Hector Mazariegos, Orlando Rivera, Virginia Ross, Arturo Velazquez

Booking Representation

Michael Mushalla (Double M Arts & Events)

Legal Counsel

Mark Selinger (Greenberg Traurig, LLP)

Accountant

PKF O'Connor Davies

Orthopedist

David S. Weiss, MD (NYU Langone Health)

Medical Advisor

Mark E. Horowitz, MD

Physical Therapist

Harkness Center for Dance Injuries at NYU Langone Health

Hilot Therapist

Jeffrey Cohen

BOARD OF DIRECTORS**Chair**

Judith R. Fishman

Vice-Chair

David Resnicow

Vice-Chair

Mark Selinger

Secretary

Isaac Mizrahi

Sarabeth Berman

Frederick Bland

Mary Ann Casavant

Margaret Conklin

Shelby Gans

York-Chi Harder

Marc James

Suzy Kellems Dominik

Nicholas Ma

Timothy J. McClimon

Helen Meyer

Mark Morris

Ellen Offner

Onay Payne

Darryl Pinckney

Jocelynne Rainey, EdD

Jane Stine

Nancy Umanoff

Thanks to Maxine Morris.

Sincerest thanks to all the dancers for their dedication, commitment, and incalculable contribution to the work.

Additional support provided by Mark Morris Dance Group **PARTNERS** contributing \$1,500–\$11,999 annually. LEADING PARTNER \$6,000–\$11,999 Anonymous (2), Wally and Roz Bernheimer, Frederick and Morley Bland*, Terry Boyer, Jeffery and Tina Budge, Con Edison, Continental Grain Foundation, The Evelyn Sharp Foundation, Michael and Nancy Feller, Jeanne D. Fisher, Neil Ericsson and Karen Florini, Lori Raphael and J. Michael Hemmer*, Jerome Robbins Foundation, Joseph and Joan Cullman Foundation for the Arts, Kenneth Aidekman Family Foundation, Leatherwood Foundation, William Lockwood, Jr, The Lotos Foundation, Onay Payne*, Supernus Pharmaceuticals, The Tony Randall Theatrical Fund, Inc., Cecilia Paul and Harry Reinert, The Sence Foundation,

Spernus Pharmaceuticals, Susan Sills, Sills Family Foundation, Jane Levy Troy*, Nancy Umanoff, The Wallace Foundation Special Projects Fund at The New York Community Trust, June and Jeffrey Wolf, Zeitz Foundation. COLLABORATING PARTNER \$3,000–\$5,999 Anonymous (2), Kate Weil and Stuart Bauchner*, Sarabeth Berman and Evan Osnos*, Bossak/Heibron Charitable Foundation, Carmie and Merv Budge, Cynthia A. Clegg, Harold Clinton*, Carol Yorke and Gerard Conn*, Carol Ann Dyer, Sarah and Michael Gerstenzang, John and Gillett Gilbert, Sharon Gurwitz*, V Hansmann, The Harkness Foundation for Dance, Kate Bernheimer and Xia Hendricks, Jock Ireland, Melissa and Marc James*, Mollie Katzen, Kate and Tom Kush, Fanny van Kwawegen, Nancy Langsan, Judy Lichterman, Lily Auchincloss Foundation, Inc., Marta Heflin Foundation, Joe Munzenrider, Ellen and Arnold Offner*, Marjorie Randolph Patrick Ravey, Toby E. and Robert Rubin, Gabriel and Jolie Schwartz, Emmanuel Torrijos and Jing Shang Tan, Mark Horowitz and Dorrine Veca, Barbara and Michael Zimmerman. SPONSORING PARTNER \$1,500–\$2,999 Anonymous, Jane Aaron, American Parkinson Disease Association, Inc., Yoko and Emanuel Ax, Lane Heard and Margaret Bauer*, Alan Beller, Stephanie Boye, Mark Selinger and Iris Cohen, Kate Costlow and John D'Amore, Belden H. and Pamela K. Daniels, Mary Darmstaetter, John and Linda Donovan, Ed and Edie Drcar*, Lisabeth During, Thomas Evans, Jean Fuller Farrington*, Jay and Patricia Freeman, Lynn and Brian Grant Family, Stephen M. Foster, Carolyn George*, Robert Goldberg, Thomas Shapiro and Madeleine Grynsztejn, Juliet Burrows and Kim Hostler, Kim Huskey, Frances Ingebritson, David Iverson, Richard Rubinstein and Katherine Kolbert, Leslie Lassiter, Charles and Jennifer Lawson, Fred and Jean Leventhal, Laurence and Jane Levine, The Herman Liebmman Foundation,

Stanley and Judith Lubman, Jennifer Melby, Emily Omura*, Stephen Partridge, Antony Peattie, Megan and Greg Pursell*, Drs. Jocelynn and Perry Rainey*, RCL Fund, Mikhail Baryshnikov and Lisa Rinehart, Mary Kathryn and Richard Roelofs*, Catherine Lebow and Seth Rosenberg, J. Loux and Carol Sanders, Carissa and Jack Schlosser*, James Seely, Cindy Sherman*, Elizabeth Rose and William Hurt Sledge, David Stang, Target Corporation, Grace and John Timberlake*, Judith and Charles Tobey, Ruth and Alan Tobey, Diane and Stephen Volk, Mary Waters, Mary Ann and Ben Whitten*, Richard Yancey, and the more than 2,100 contributors and members giving \$1–1,499 annually.

LEGACY GIVING: Individuals who name the Mark Morris Dance Group in estate plans through bequests, gift annuities, charitable trusts, and beneficiary designations ensure a strong future for our organization. MMDG gratefully acknowledges recent living legacy commitments from Sandy Hill, Jane F. Troy, and Patrick Leader. If you're new to legacy planning, explore our free tool at freewill.com/mmdg. If you have already planned for MMDG in your will, please let us know so we can welcome you to our Legacy Society. Visit freewill.com/record/mmdg to notify us of your intended support.

Mark Morris Dance Group acknowledges special gifts. IN MEMORY Howard Abrams, Ralph Alpert, Jean Arrington, Jean Arthur, Christine Austria, Nancy Bailin, Kitt Barnes, James Francis Barry, Michael Blackwood, Arnie Beiles, Rex Kenneth Davenport, Bill Davies, June Quackenbush Denham, David Holmes Drennen, Zoltan David Farkas, Adolph Fuerst, Leonore Gordon, Mona Gottesman, Lawton Johnson, Herb Kaufman, Jerome M. Keefe, Dr. Carl Leventhal, Howard Levin, Harvey Lichtenstein, Marshall Marcovitz,

John O. Miller, Bernie and Sandi Pollack, Pauline Y. Pon, K Robert Reaster, Molly Moore Reinhart, Rita Rose, Judy Rosenblatt, Judy Schonblom, Carolyn Shen, Janet Sherman, Eileen Stief, Nancy Snyder, Tarlow, Stanley J. Wertheimer, Raymond Wolf, Harold W. Young, Jim Young, and Donna Jean Wienecke. IN HONOR Amy Bauman, Harris Berman, Lucy Bowen McCauley, Sam Black, Carmella Connelly, Alex Cook, The Dancin' Cast and Crew, Ann Feldman, Judith R. Fishman, Natasha Frater, Sharon Friedler, Elise Gaugert, Cyndy Gilbertson, Lauren Grant, Pat Hall, Marion Yager Hamermesh, Lou Harrison, Carol Krasnow, Elaine Koss, The Kuehne Family, David Leventhal, Larry and Jane Levine, Ruth Manson and Family, Alison Marshall, Maria Macfarlane, Gunilla Norris, Ellen Offner, Pam Patrick, Abigail Perelman, Sharon Resen, Aunt Mireille, Louise Restagno, Calvin A. Rollins II, Tara Sherman, Susan Sills, Jeannette MacMillan and Sam Singer, Edith Tinnes, Charlie and Judy Tobey, Nancy Umanoff, Julia Weber, Olie Westheimer, Cristobal Williams, Sima Wolf, the superb staff of Dance for PD and the entire Mark Morris Dance Group. DONOR ADVISED FUNDS American Endowment Foundation. The Boston Foundation, Chevy Chase Trust Company, Community Foundation Boulder County, Fidelity Charitable Foundation, FJC – A Foundation of Philanthropic Funds, Goldman Sachs Philanthropy Fund, The Greater Cincinnati Foundation, Impact Assets, Jewish Communal Fund, Jewish Community Federation & Endowment Fund, Jewish Federation of Cleveland, JP Morgan Charitable Giving Fund, Marin Community Foundation, National Philanthropic Trust, The New York Community Trust, Schwab Charitable, Stonewall Community Foundation, Vanguard Charitable. CORPORATE MATCHING GIFT CONTRIBUTIONS American Express Charitable Fund, Bank of America, Brooklyn Community Foundation, CNA, Gilead, Google

Matching Gift Program, International Monetary Fund, William Penn Foundation, Premera, Robert Wood Johnson Foundation, SiriusXM, TripAdvisor.

IN KIND CONTRIBUTORS: The Celeste Group*, Greenberg Traurig, LLP, Mark Horowitz, MD, Meyer Sound Laboratories, Inc.

* Contributors who have generously pledged multi-year support for Mark Morris BOLD. Learn more about our BOLD initiatives and pledge your support at mmdg.org/bold

The Mark Morris Dance Group is a member of the Cultural Solidarity Fund, Dance/USA, the Downtown Brooklyn Arts Alliance, and Museum Arts and Culture Access Consortium.

"Alfie"—From the Paramount Pictures Film *Alfie*. Music by Burt Bacharach. Lyrics by Hal David. Published by Famous Music, LLC, Sony/ATV Harmony.

"What the World Needs Now," "Are You There (With Another Girl)," "Do You Know the Way to San Jose," "I'll Never Fall in Love Again," "Don't Make Me Over," "Always Something There to Remind Me," "Anyone Who Had a Heart," "Walk on By," "Message to Martha," "I Say a Little Prayer,"—Written by Burt F. Bacharach and Hal David. Published by New Hidden Valley Music (ASCAP) and BMG Gold Songs (ASCAP) o/b/o itself and Songs of Fujimusic (ASCAP).

"The Look of Love"—From the feature film *Casino Royale*. Written by Burt Bacharach and Hal David. Published by Colgems-EMI Music Inc.

"The Blob"—From the Paramount Pictures film *The Blob*. Music by Burt Bacharach. Lyrics by Mack David. Published by Famous Music, LLC, Sony/ATV

Harmony and Universal/Polygram International Publishing Inc. and Soroka Music Ltd. o/b/o Jobe Music, Brad Reinis Music and Debbie Grillo Music.

“Raindrops Keep Falling on My Head”—Written by Burt F. Bacharach and Hal David. Published by New Hidden Valley Music (ASCAP), BMG Gold Songs (ASCAP) o/b/o itself and Songs of Fujimusic (ASCAP), and Warner Chappell Music, Inc.

The Look of Love © 2022 Disalced, Inc.

MARK MORRIS DANCE GROUP

3 Lafayette Avenue
Brooklyn, NY 11217-1415
(718) 624-8400

Follow and tag us on Facebook, Twitter, and Instagram @markmorrisdance

To learn more about our work and programs, please visit mmdg.org



EST.
19
69



Land Acknowledgement

The University of Illinois System carries out its mission in its namesake state, which includes the traditional territory of the Peoria, Kaskaskia, Piankashaw, Wea, Miami, Mascoutin, Odawa, Sauk, Mesquaki, Kickapoo, Potawatomi, Ojibwe, Menominee, Ho-Chunk, and Chickasaw Nations. These lands continue to carry the stories of these Nations and their struggles for survival and identity.

As a land-grant institution, the University of Illinois has a particular responsibility to acknowledge the peoples of these lands, as well as the histories of dispossession that have allowed for the growth of this institution for the past 150 years. We are also obligated to reflect on and actively address these histories and the role that this university has played in shaping them. This acknowledgement and the centering of Native peoples is a start as we move forward for the next 150 years.

Krannert Center affirms the commitment by the university to move beyond these statements, toward building deeper relationships and taking actions that uphold and preserve Indigenous rights and cultural equity.

As we gather to experience this performance, we have an opportunity to reflect on the ways that systems of oppression have shaped our society. We can work together to create systems that support human dignity, establish equity, strengthen cross-cultural relationships, and draw upon the creative capacity of all people that make up this community, state, nation, and world.



DINING

Our lobby services are open day and evening to serve you:



intermezzo cafe

SUSTAINABLE SPECIALS +
EVERYDAY INDULGENCES

STAGE5BAR

SMOOTH SELECTIONS +
ARTISANAL APPETIZERS

WHY WAIT?

Order before you head into the theatre, and we'll have your food and beverages waiting for you at intermission or after the show.



INVEST IN THE FUTURE OF THE ARTS

Support Krannert Center today



Connecting People, Creating Happiness

Krannert Center is committed to providing programs that inspire, engage, challenge, and revitalize. The support of our donors and friends enables the Center to bring in diverse international artists and launch transformative initiatives that foster inclusivity and bring about dynamic change.

Every contribution counts. Together, we can effect powerful change that will impact generations to come.

Please consider making a gift to Krannert Center today. Together, we can strengthen the lasting impact of the Center's work, while ensuring that students and the greater community have access to enriching performances and cultural experiences.

Join us as we invest in the future of the arts.

Make Your Gift Today

advancement@krannertcenter.illinois.edu • 217.333.6700
KrannertCenter.com/Give

Would you like to make Krannert Center part of your legacy?

Contact Cheryl Snyder (217.333.2533 | casnyder@illinois.edu)
or Bethany Whoric (217.300.6042 | bbwhoric@illinois.edu) to learn more
about making a planned gift to Krannert Center for the Performing Arts.

KRANNERT CENTER PHILANTHROPY AND ADVOCACY

Krannert Center’s dedication to the celebration, exploration, and cross-pollination of the arts is advanced through these special programs. Donors who champion such work make it possible for more people in our community to participate in life-affirming experiences.

2022-2023 ADVANCEMENT COUNCIL

This passionate group of arts advocates assists Krannert Center staff in expanding the Center’s leadership and financial resources.

Co-Chairs:

Janet & Douglas Nelson
Ghazala Ahmad
Terry & Barbara England
Michelle Gonzales
Susan & Michael Haney
Lisa & Mark Klinger

Leonard (Len) Lewicki
Marina & Nenad Marjanovic
Susan & Brendan McGinty
Tracy Parsons
Susan & Sam Reese
Shandra Summerville

2022-2023 KRANNERT CENTER YOUTH SERIES

The Youth Series features daytime performances, online media created by performing artists, and educational activities designed especially for pre-K through high-school-aged students. Children who participate learn to appreciate the performing arts, gain knowledge, build social skills, and integrate live performance experiences into classroom work. Thank you to our Youth Series sponsors. If you’d like to learn how you can become a sponsor for the Krannert Center Youth Series, please contact Krannert Center Advancement at 217.333.6700 or advancement@krannertcenter.illinois.edu.

Bernard and Prudence Spodek
Endowed Fund
Ann H. Bender Youth Series
Endowment
The Susan Sargeant McDonald
Endowed Fund for Youth
Programming (Suzi was
the founder/developer
of the Krannert Center
Youth Series)
Susan & Michael Haney
Robert & Mary-Alayne Hughes

Jane & Christian Scherer
Brenda & Stephen Pacey
Jill & James Quisenberry
Carol & Ed Scharlau
Anne & David Sharpe
Audrey Ishii & Charlie Smyth
The Rotary Club of Champaign
Illinois Arts Council
National Endowment
for the Arts

2022-2023 CAMPAIGN FOR YOUNG AUDIENCES

Through the Campaign for Young Audiences, students at the U of I enjoy \$10 tickets for nearly every event presented at Krannert Center while other college students and children receive significant discounts. If you’d like to learn how you can become a sponsor, please contact Krannert Center Advancement at 217.333.6700 or advancement@krannertcenter.illinois.edu.

Lead Sponsors



Phyllis Robeson & Family

Sponsors

Susan & Michael Haney Fund
for Young Audiences
Gertrude Brokaw McCloy
Endowment
Clarette & Zvi Ritz

Jennifer & Tom Dillavou
Anke & Paul Tucker
UpClose Marketing
and Printing

KRANNERT SOCIETY

The University of Illinois, the College of Fine and Applied Arts, and Krannert Center are profoundly grateful for the commitment of Krannert Society members. Through donations, pledges, and residual gifts of \$1 million or more, these open-hearted visionaries help build a thriving community and encourage cross-cultural understanding. Their support sustains the extraordinary vision of Herman and Ellnora Krannert to create a vibrant gathering place like no other.



VALENTINE JOBST III (1904-1993)
March 1994



CLAIR MAE ARENDS (1912-2000)
G. WILLIAM ARENDS (1914-1997)
March 2000



MARILYN PFLEDERER ZIMMERMAN
(1929-1995)
VERNON K. ZIMMERMAN
(1928-1996)
November 2003



HELEN FARMER
JAMES FARMER (1931-2020)
April 2014

FOELLINGER SOCIETY

Demonstrating their steadfast dedication to the arts, members of the Foellinger Society have donated or pledged \$500,000 to \$999,999. Because of their generosity, everyone in this community can unite in joyful and engaging experiences. These magnanimous arts lovers celebrate the spirit of Helene Foellinger, whose memorial gift honored her sister, Loretta Foellinger Teeple, and established the Marquee Performance Endowment.



AVIS HILFINGER (1915-2004)
DEAN HILFINGER (1912-2006)
April 2000



KENNETH ANDERSEN (1933-2020)
MARY ANDERSEN
August 2009



CAROLYN G. BURRELL
April 2012



CAROLE & JERRY RINGER
April 2014



EDITH ANN STOTLER
(1946-2022)
August 2017



K. SARAH SPAULDING
(1930-2022)
Feb 2017



**JANE BUFORD SCHERER & CHRIS
SCHERER**
June 2022



DENA & JIM VERMETTE
June 2022

IKENBERRY SOCIETY

University of Illinois President Emeritus and First Lady Stan and Judy Ikenberry have long demonstrated their love for the arts and their deep commitment to enhancing learning experiences for all University of Illinois students. Krannert Center gratefully acknowledges their steadfast support by introducing the Ikenberry Society to recognize donated gifts or pledges of \$250,000 to \$499,999.



JUDITH & STANLEY IKENBERRY
September 2014



JERALD WRAY & DIRK MOL
March 2016



DAVID A. KROOKS
August 2016



HELEN & DANIEL RICHARDS
June 2016



HOLLY & KURT HIRCHERT
February 2017



ANONYMOUS
May 2018



JOAN & PETER HOOD
November 2018



SUSAN & MICHAEL HANEY
April 2019



**LYNN WEISEL WACHTEL
& IRA WACHTEL**
June 2019



JOHN & KAY SHANER
July 2019



LEONARD (LEN) LEWICKI
May 2021



**TIMOTHY TEMPLE & JERRY
CARDEN**
June 2022



FRAN & MARC ANSEL
June 2022

COLWELL SOCIETY

Dr. John B. Colwell, Pauline Groves Colwell, and R. Forrest Colwell provided critical funding for the Marquee Performance Endowment, and the Colwell Society gratefully acknowledges their invaluable assistance. Members have donated or pledged \$100,000 to \$249,999 for celebrating, preserving, and exploring the arts right here and around the globe.



DOLORIS DWYER
(1918-1997)
April 1996



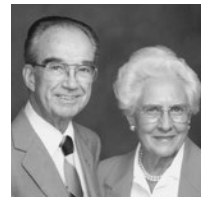
EMILY GILLESPIE
(1909-2000)
JAMES GILLESPIE
(1905-1999)
December 1996



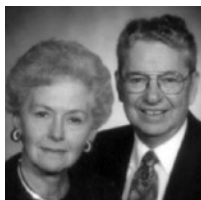
ROSANN NOEL
(1932-2018)
RICHARD NOEL
April 1997



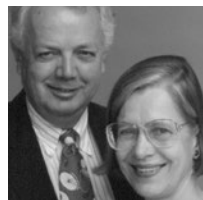
JAMES W. ARMSEY
(1917-2008)
BETH L. ARMSEY
(1918-2019)
February 1998



LOIS KENT
(1912-1999)
LOUIS KENT
(1914-1994)
October 2000



JUNE SEITZINGER
(1928-2020)
GROVER SEITZINGER
(1925-2019)
September 2001



RICHARD MERRITT
(1933-2005)
ANNA MERRITT
November 2006



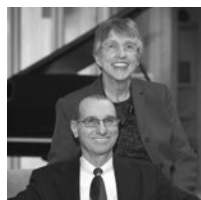
JOHN PFEFFER
(1935-2017)
ALICE PFEFFER
November 2006



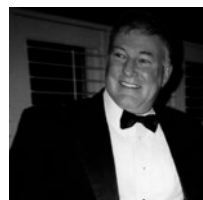
ANONYMOUS
November 2006



LINDA M. MILLS
(1940-2006)
October 2007



**JUDITH & JON
LIEBMAN**
January 2008



**MICHAEL
CARRAGHER**
(1946-2009)
September 2008

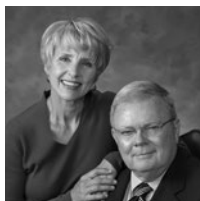


VIRGINIA R. IVENS
(1922-2008)
February 2009

**THE SUSAN
SARGEANT
MCDONALD
ENDOWED FUND
FOR YOUTH
PROGRAMMING**
Suzi was the founder/
developer of the
Krannert Center Youth
Series
July 2010



**MISAHO &
RICHARD BERLIN**
October 2010



**DIANA & WARD
MCDONALD**
March 2011



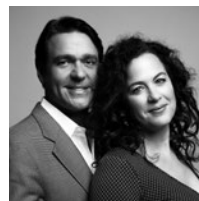
**GRACE & JOHN
MICETICH**
March 2011



JO ANN TRISLER
(1946-2010)
November 2011



LEA GIESELMAN
(1932-2014)
BOB GIESELMAN
(1932-2015)
April 2013



**JULIE & NATHAN
GUNN**
April 2014



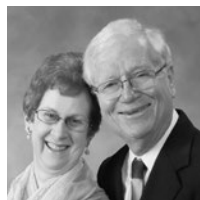
MICHAEL SWINDLE
April 2014



ANONYMOUS
November 2015



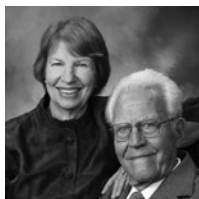
LINDA WEINER
(1944-2021)
BARRY WEINER
February 2017



**ANNE MISCHAKOFF
HEILES & WILLIAM
HEILES**
May 2017



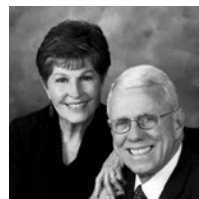
**JILL & JAMES
QUISENBERRY**
May 2017



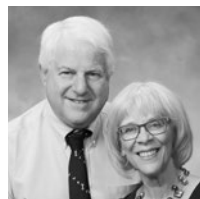
DALE STEFFENSEN
(1922-2018)
**MARGARET
STEFFENSEN**
June 2017



**CECILE & IRA
LEBENSON**
December 2017



BURT SWANSON
(1939-2020)
IRIS SWANSON
December 2017



**TERRY & BARBARA
ENGLAND**
April 2018



**PHYLLIS ROBESON
& FAMILY**
February 2019
KYLE ROBESON
(1929-2021)



**JAMES R. FRAME
& CANDACE PENN
FRAME**

April 2019



**MICHAEL &
MARGARET ROSSO
GROSSMAN**

July 2019



**PATRICIA & ALLAN
TUCHMAN**

April 2021



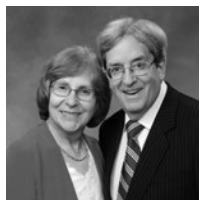
**VICTOR FELDMAN
(1935-2018)
JUDITH FELDMAN
(1938-2021)**

September 2021



**SUSAN & RICHARD
SCHNUER**

November 2021



**JUDITH & RICHARD
KAPLAN**

February 2022



**KATHRYN I. SEYBERT
& MICHAEL J.
ANDRECHAK**

June 2022



**PATRICIA PLAUT &
KENNETH SUSLICK**

October 2022



**RICHARD & JAYNE
BURKHARDT**

January 2023



**SELMA K. RICHARDSON
(1931-2019)**

March 2023

Donations by society members include estate gifts; outright donations; charitable gift annuities; charitable remainder trusts; gifts of real estate, insurance, and securities; and pledges fulfilled over a period of five years. To explore how you can create your own lasting legacy, contact us at 217.333.6700 or advancement@krannertcenter.illinois.edu.

2022-2023 MARQUEE CORPORATE & COMMUNITY SPONSORS

Corporate and community support—both cash and in-kind—deepens Krannert Center’s capacity to inspire public discourse, communal respect, and collective joy. Please join Krannert Center in thanking the following corporate and community sponsors for their support of Krannert Center performances and initiatives.

Corporate & Community Platinum Sponsors

(\$30,000 OR MORE)



Corporate & Community Lead Gold Sponsors
(\$20,000-\$29,999)



Corporate & Community Gold Sponsors
(\$10,000-\$19,999)



TO JOIN THIS POWERFUL NETWORK of like-minded professionals while receiving guaranteed visibility and marketing benefits, visit KrannertCenter.com/Give or contact Bethany Whoric at 217.300.6042 or bbwhoric@illinois.edu.

2022-2023 GRANTS



DORIS DUKE
CHARITABLE FOUNDATION

DORIS DUKE CHARITABLE FOUNDATION

Endowment support from the Doris Duke Charitable Foundation continues to enhance Krannert Center’s presentation of diverse, world-class national and international visiting artistry; supporting the creation of new work; and increasing engagement and collaboration across campus.



ILLINOIS ARTS COUNCIL

The Illinois Arts Council Agency provides general programing support to ensure that audiences of all ages have direct access to world-class theatre, dance, and music.

FRANCES P. ROHLEN VISITING ARTISTS FUND/ COLLEGE OF FINE + APPLIED ARTS

This grant, a generous gift from the Rohlen Family.



THIS PROJECT FUNDED BY
STUDENT SUSTAINABILITY COMMITTEE

THE STUDENT SUSTAINABILITY COMMITTEE

The Student Sustainability Committee provided funding for the Krannert Center Audiences Lighting Retrofit Project, which continues to increase energy efficiency, decrease labor requirements, and improve safety conditions.



Center for
Advanced
Study

GEORGE A. MILLER ENDOWMENT PROGRAMS COMMITTEE

The George A. Miller Endowment Programs Committee supports CultureTalk.

THE AUGUSTINE FOUNDATION

THE AUGUSTINE FOUNDATION

The Augustine Foundation provides continued major support for ELLNORA | The Guitar Festival.

MARQUEE PATRON SPONSORS

Krannert Center is grateful for the passion and commitment of the following individuals whose gifts support the expansive range of experiences offered at Krannert Center: formative moments for tomorrow's global leaders, performances that comfort and transform, opportunities to create and enjoy groundbreaking work, engagement activities that offer self-discovery and hope, architectural treasures to delight the senses, and remarkable moments to foster lifelong memories. If you'd like to learn more about how to become a sponsor, please contact Krannert Center Advancement at 217.333.6700 or advancement@krannertcenter.illinois.edu.

Endowed Underwriters

(\$10,000 OR MORE PER EVENT)

Clair Mae & G. William Arends
Avis & Dean Hilfinger
Judith & Stanley Ikenberry
Valentine Jobst III
Edith Ann Stotler
Marilyn Pflederer & Vernon K. Zimmerman

Endowed Sponsors

(\$5,000-\$9,999 PER EVENT)

Mary & Kenneth Andersen
Beth & James Armsey
Doloris Dwyer
Terry & Barbara England
Helen & James Farmer
Joan & Peter Hood
Lois & Louis Kent
Selma K. Richardson
Carole & Jerry Ringer
June & Grover Seitzinger
Sarah K. Spaulding
Bernard and Prudence Spodek Endowed Fund

Endowed Co-sponsors

(\$2,500-\$4,999 PER EVENT)

Ann H. Bender Youth Series Endowment
Robert Bender
Victor & Judith Feldman
Lena & Bob Gieselman
Emily & James Gillespie
Margaret Rosso Grossman & Michael Grossman
Virginia R. Ivens
Anna Merritt
The Susan Sargeant McDonald Endowed Fund for Youth Programming (Suzi was the founder/developer of the Krannert Center Youth Series)
Joanne & Charles McIntyre
Mildred Maddox Rose
Kay & John Shaner
Jo Ann Trisler
Pat & Allan Tuchman

Campaign for Young Audiences

Anonymous
Jennifer & Tom Dillavou
Susan & Michael Haney Fund for Young Audiences
Gertrude Brokaw McCloy Endowment
Clarette & Zvi Ritz
Phyllis Robeson & Family
Anke & Paul Tucker
UpClose Marketing and Printing

Patron Underwriters

(\$10,000 OR MORE PER EVENT)

Anne Slichter
Susan & Robert Welke

Patron Sponsors

(\$5,000-\$9,999 PER EVENT)

Carol & Willis Colburn
Dixie & Evan Dickens
Beverly & Michael Fries
Shirley Soo & Matthew Gorman
Lois & Ernest Gullerud
Ann Mischakoff Heiles & William Heiles
Judith & Richard Kaplan
Cecile & Ira Levenson
Judith & Jon Liebman
Lois & Robert Resek
Marlyn Rinehart
Trent Shepard
Iris & Burton Swanson
Shirley & Arthur Traugott

Patron Co-sponsors

(\$2,500-\$4,999 PER EVENT)

Ghazala Ahmad
Amy & Matthew Ando
Frances & Marc Ansel
Dianna Armstrong
Jim Barrett
Sherry & Nelson Beck
Robert Bender
Timothy Temple & Jerry Carden

Beth & David Chasco
Harriet & Herschel Cline
Emmie Fisher
Susan & Michael Haney
Janice Bahr & Erwin Hoffman
Peggy & Christopher Huson
Diane Gottheil
Marianne Kalinke
Lisa & Mark Klinger
Leonard (Len) Lewicki
Ann & Stephen Long
Kathryn & Stephen Marshak
Gigi & Frank Miles
Sallie & Norman Miller
Jerald Wray & Dirk Mol
Martha & Thom Moore
Claudia Reich & Gary Olsen
Brenda & Stephen Pacey
Dr. Jan Marie Aramini & Michael Pettersen
Jill & James Quisenberry
Mildred Maddox Rose
Deborah & Stephen Rugg
Anne & David Sharpe
Carol & Franklin Shupp
Mary Schuler & Stephen Sligar
Margaret Stillwell
Masako Takayasu
Nancy & Edward Tepper
Joan & Walter Tousey
Joy Thornton-Walter
Pat & Allan Tuchman
The Weiner Family
Sarah Wigley
Karen & William Wilkinson
Sarah & Charles Wisseman

HELP ENSURE THE IMPACT OF THE

ARTS for future generations by becoming a donor today. Visit KrannertCenter.com/Give, contact us at 217.333.6700 or advancement@krannertcenter.illinois.edu.

MARQUEE CIRCLE AND LOOP MEMBERS

We gratefully acknowledge these individuals and businesses for their generosity and commitment to the arts. Their support enabled the Center to welcome back in-person audiences for Music, Theatre, Dance, and visiting artist productions this past season. Krannert Center continues to make accessibility improvements, co-commission works to help support artist partners, and focus on engagement work within the community. If your membership has lapsed and you'd like to renew, please contact Krannert Center Advancement at 217.333.6700 or advancement@krannertcenter.illinois.edu.

[LIST CURRENT AS OF OCTOBER 20, 2022]



Ghazala Ahmad
 Melissa Huff & Richard Alkire*
 Walter Alspaugh
 Nadja & Carl Altstetter
 Ruth & James Anderson
 Colleen Chon & Quintin Anderson
 Amy & Matthew Ando
 Kathryn Seybert & Michael Andrechak
 Frances & Marc Ansel*
 Dianna Armstrong*
 Barbara E. Barnes
 Jim Barrett
 Tangül & Tamer Basar
 Diane A. Tasca & Norman Beamer
 Sherry & Nelson Beck
 Carol & Carl Belber
 Dorothy Bell
 Erica & Alessandro Bellina
 Carol Berthold
 Mary Blair
 Doug Blair
 Marsha Clinard & Charles Boast
 Abbie & Mike Broga
 Elizabeth & Michael Brunk
 Annette & John Buckmaster
 Joyce & Rabel Burdge
 Jayne & Richard Burkhardt Jr.
 Carolyn G. Burrell
 Ann & Roy Campbell
 Helen & Andreas Cangelaris
 Timothy Temple & Jerry Carden
 Nancy & Allen Carter
 Beth & David Chasco
 Kathleen & Felix Cimakasky
 Harriet & Herschel Cline

Carol & Willis Colburn
 Casey Sutherland & Linda Coleman
 Tina & John Colombo
 Jongin & Robert Craggs
 Janis Chadsey & Al Davis
 Deborah Day
 Elizabeth Cardman & Paul Debevec
 Richard DeLong
 Dixie & Evan Dickens*
 Jennifer & Tom Dillavou
 Anastasia & James Economy
 Ann Einhorn
 Paul Ellinger
 Jo & Thomas Emerson
 Terry & Barbara England
 Karen & Michael Folk
 Shari & Ben Fox
 Beverly & Michael Frieze
 Michael Fuerst
 Nancy & Bert Fuller
 Victoria Christensen & Gary Gladding
 Melanie Loots & George Gollin*
 Shirley Soo & Matthew Gorman
 Diane Gottheil
 Ondine & George Gross
 Margaret Rosso Grossman & Michael Grossman
 Lois & Ernest Gullerud
 Julie & Nathan Gunn
 Susan & Michael Haney
 Sharon & Terence Harkness
 Ron Harshman
 Kathleen Harvey
 Clare & Alan Haussermann
 Jane Trishman Heaton
 Barbara & John Hecker*
 Anne Mischakoff Heiles & William Heiles
 Jan & Bruce Hinely
 Ellen Hinterlong
 Holly & Kurt Hirschert

Kathryn Rybka & Darrell Hoemann
 Photography
 Janice Bahr & Erwin Hoffman
 Joan & Peter Hood*
 Mary-Alayne & Robert Hughes
 Peggy & Christopher Huson
 Ingrid & Bruce Hutchings
 Laura & Gale Jamison
 Nancy Johnson
 Ronald Johnson
 Joan Volkmann & John Jones
 Martha Ann Jones
 Patricia & James Jurgens
 Patricia & Peter Kale
 Marianne Kalinke
 Judith & Richard Kaplan
 Nancy & Edward Karrels
 Paula Kaufman
 Josephine & Douglas Kibbee
 Brenda & Peter Kimble
 Lisa & Mark Klinger
 Antje & Edward Kolodziej
 Wynne Sandra Korr
 Sheila & Philip Krein
 Marion & Herman Krier
 David A. Krooks
 Nancy Parker & James Kuklinski
 Cecile & Ira Lebonson*
 Brenda Lerner-Berg
 Emily Levin
 Diana Sheets & Stephen Levinson
 Leonard (Len) Lewicki
 Kun Jiang & Xuan Li
 Judith & Jon Liebman
 Ann & Stephen Long
 Brenda & Morgan Lyng
 Marina & Nenad Marjanovic
 Kathryn & Stephen Marshak
 Leslie & Gary Mason
 Betsy Bachmann & Rebecca McBride
 Gertrude Brokaw McCloy Endowment

Erica & Malcolm McClure
Carolyn and Dale McElrath
Susan & Brendan McGinty
Mrs. Jack H. McKenzie
Anna Merritt*
Theresa & Bruce Michelson
Gigi & Frank Miles
Sallie & Norman Miller
Jerald Wray & Dirk Mol*
Martha & Thom Moore*
Nancy Morse*
Armine & Rudolf Mortimer
Jane & Walter Myers
Janet & Douglas Nelson*
A. Mark Neuman
Debra Lee & Ty Newell
Richard Noel
Jeanette Nugent
Claudia Reich & Gary Olsen*
Brenda & Stephen Pacey
Jean Paley
Donald Perrero
Marjorie Perrino
Carolyn & Todd Petersen
Alice Pfeffer*
Kathleen A. Holden & David
Prochaska
Jill & James Quisenberry*
Gloria Rainer
Susan & Sam Reese
Lois & Robert Resek*
Karen & Michael Retzer
Helen & Daniel Richards*
Marlyn Rinehart
Carole & Jerry Ringer*
Clarette Ritz
Linda & Ronald Roaks
Phyllis Robeson
Lisa & Eric Robeson
Anne Robin
Julia & Gene Robinson
Taya & Mike Ross
Christie Roszkowski
Deborah & Brian Ruddell
Deborah & Stephen Rugg*
Jane & John Santogrossi
Shozo Sato
Carol & Ed Scharlau*
Jane & Christian Scherer
Susan & Richard Schnuer
Kim Robeson-Schwenk & Dean

Schwenk*
Kay & John Shaner
Anne & David Sharpe
Trent Shepard
Janice Sherbert
Jan & David Sholem
Carol Shupp
Birute & Vaidotas Simaitis
Patricia & Charles Simpson
Brenda & Dale Slack
E. Jean Smith
Mary Schuler & Stephen Sligar
Audrey Ishii & Charles Smyth
Prudence Spodek
Elaine & Case Sprenkle
Cecile Steinberg
Margaret Stillwell
Sheila Sullivan
Patricia Plaut & Kenneth Suslick
Iris & Burton Swanson*
Cynthia Swanson
Jason & Michelle Swearingen
Bonnie & Bob Switzer
Masako Takayasu*
Nancy & Edward Tepper
Ray Timpone
Joan & Walter Tousey
Shirley & Arthur Traugott*
Carolyn Casady-Trimble & Ralph
Trimble
Devon Hague & Dallas Trinkle
Pat & Allan Tuchman*
Carl L. Vacketta
Dena & Jim Vermette
Stella B. & C. Max Volk
Lynn Weisel Wachtel & Ira Wachtel
Chip Walgren
Joy Thornton-Walter
Paula Watson
Barry Weiner
Susan & Robert Welke
Hana & David Wickersheimer
Sarah Wigley
Rebecca & Paul Wigley
Karen & William Wilkinson
Sarah & Charles Wisseman
Patricia Cassidy & Andrew Wycislak
Elaine & Harold Yoon
Joan & Theodore Zernich
And gifts from three Anonymous
donors

Memorial Gifts to the Marquee Circle

Jane M. Barrett
James Barrett
Martha & Morris Hecker
Barbara & John Hecker
Rosann Noel
Matthew Noel

*Former member of the Krannert Center Advancement Council



Pat Januszki & Dick Adams
 Karen & Larry Apfelbaum
 Carol & Richard Arnould
 Charlotte Arnstein
 Grace Ashenfelter
 Judith Bach
 Susan & G. Tim Bachman
 Joseph Barnes
 Paula & Clifford Barnes
 Sandra & Ritchie Barnett
 Maeline & Robert Barnstable
 Jane & Peter Barry
 Rita Bartholomew
 Kathleen & S. Eugene Barton
 Ronald & Susan J. Bates
 Norma Bean
 Mary Beastall
 Susan & Wayne Bekiares
 Dorothy & James Bennett
 Kathleen & John Lansingh Bennett*
 Laura & Kenneth Berk
 Mary & Kenneth Beth
 Carol & Richard Betts
 Debra & Kenneth Bezan
 Sue Biddle
 Bruce Bonds
 Tamara Bouseman
 Kathryn & Van Bowersox
 Hannah & Justin Brauer
 Amy Mueller & James Brennan
 Liora & Yoram Bresler
 Margaret & Donald Briskin
 William Brooks
 Channing Brown
 Donald Buss
 David Campbell
 Louise Walczak & Joseph Carey
 Sandra Carr
 Susan Hinrichs & Alan Carroll
 Donna & Steven Carter
 Sandra Casserly
 Joyce & Salvatore Castronovo
 Yvonee & Robert Cataneo
 Elaine Bearden & Craig Chamberlain
 Alexander Chang
 Chen Chen
 Matthew Chen
 Candice Chirgotis

Eileen & Dennis Coleman
 Deborah Cook
 Janet & William Coombe
 Nancy & Fred Coombs
 Kathleen Vance & Charles Cowger
 Nancy Creason
 Sandra & Luis Cuza
 Elizabeth & Robert Czys
 Millie Davis
 Patricia & Robert Davis
 Susan Meinkoth & Peter Davis*
 Lucia & Ron Deering
 Nancy & Harold Diamond
 Deborah & Joseph Dipietro
 Terri Dodson
 Victoria Pifalo & Kieran Donaghy
 Robert Donohue
 Jean Driscoll
 John & Astrid Dussinger
 Ellen & Douglas Elrick
 Rhoda Engel
 E. R. Ensrud
 Breanne Ertmer
 Sharol & Victor Escobar
 Mary Ann & Robert Espeseth
 Eleanor & Walter Feinberg
 Jane Mohraz & A. Belden Fields
 Kim & Allan File
 Sandy & Joe Finnerty
 Rebecca Netti-Fioli & Stephen Fioli
 Sue Anne & Don Fischer
 Judith & Dale Flach
 Catherine Flood
 Kristin & James Flores
 Rose Marie & Brendan Foley
 Barbara Ford
 Tracey Ford
 Priscilla & Andrew Fortier
 Claudia & Eduardo Fradkin
 Karen & Alain Fresco
 Richard Furr
 Pamela & Samuel Furrer
 Janet Kalmar & Benjamin Galewsky
 Evelyn & Joseph Gill
 Derek Girtton
 Vicki & Alan Good
 Nancy Goodall
 Rose & William Goodman
 Stefanie Borntréger & Zachary Gordon
 Karen Grano
 Susan & Lewis Greenstein
 Karl Greve
 Phyllis Gron
 Kimiko Gunji
 Lila Sullivan & Don Gunning
 Karen Greenwalt & David Hamilton
 K.S. & Torin Hannan

Karen & David Harris
 Cynthia Capek & Edward Harvey
 Jenny & Dick Harvey
 Susan Bonner & Dena Hasselbring
 Dauna Hayman
 Christine & Bruce Hegemann
 John Heiligenstein
 Jannette & Donald Helfrich
 Marne Helgesen
 Deloris & Grant Henry
 Mary Henson
 Thomas Herbold
 Susan & Edwin Herricks
 Herbert Hiestand
 Caroline Phelps & Patrick Higgins
 Shawna Scherer & Steve Higgins
 Bonnie & Steven Hill
 Lila & Larry Hill
 Paul Hinson
 Jennifer & Paul Hixson
 Zarina & Hans Hock
 JoAnn Hodges
 Laurie & Robert Hodrick
 Kay Hodson
 Judith Hoffman
 Marilee & Robert Hoffswell
 Jean Holley
 Edit & Leland Holloway
 Jessie Houston
 Michael Lambert & Timothy Hutchison
 Andrew Ingram
 Margaret Inman
 Dixie & Gary Jackson
 Elizabeth & Henry Jackson
 Meghan & Cyril Jacquot
 Janet Elaine Guthrie & Mark Jaeger
 Helen & Francis Jahn
 Daniel Jensen
 Bruce Johnson
 Elizabeth Johnston
 Patricia & John Jordan
 JoAnn McNaughton Kade & Christopher Kade
 Elizabeth Kakoma
 Beverly & George Kieffer
 Janice Kimpel
 Margaret Patten & Todd Kinney
 Jeffrey & Patricia Kirby
 Gerri Kirchner
 Julia Kling
 Patricia & Frank Knowles
 Christa Knust
 Marilyn Kohl
 Jean & Thomas Korder
 Barbara & Gary Koritz
 Shari L. Kouba
 Joan & Charles Kozoll

Elizabeth & David Krchak
 Susan & Curtis Krock
 Marilyn & Don Krummel
 Jane Block & Paul Kruty
 Carrie & Richard Kubetz
 Judith Kutzko
 James Land
 Janet Schultz & Russell Lascelles
 Linda Lebie
 Carol Leff
 Jean Halstead & Beth Lehman
 Joyce Meyer & Faye Lesht
 Patricia & Vernon Lewis
 Mary & Louis Liay
 Cynthia & Michael Loui
 Brandi & Jason Lowe
 Ann Lowry
 Robin Luebs
 Suzanne & John Magerko
 Marguerite & Walter Maguire
 S. Pauline & Mankin Mak
 Tracey & J. Victor Malkovich*
 Jeannine Malmsbury
 Kate Malmsbury
 Patricia & Charles Manns
 Norma & Herbert Marder
 Susan Gonzo & Numa Markee
 Dwayne D. McBride
 Jane & Michael McCulley
 Alina Reeves & Joseph Meier
 Carol & David Meitz
 Christen Mercier
 Sharon & David Mies
 James Miller
 Charlotte Mattax Moersch & William
 Moersch
 Monahan Partners
 Linda & Mark Moore
 Anna Louise & Terry Moore
 Liz & Dan Morrow
 Cara Finnegan & John Murphy
 Catherine & Robert Murphy
 Lloyd Murphy
 Lucy Miller Murray & Martin L. Murray
 Paul Nash
 Jane & Alan Nathan
 Carol Neely
 Jeffrey Nelson
 Eve Harwood & Mark Netter
 Peter Newman & Jermone Ng
 Jack Nibling
 Lynda Dautenhahn & Lee Nickelson
 Roxanna Nixon
 Holly Nordheden
 Jenene & Richard Norton
 Valerie & Thomas Oakley

Charles Oellermann
 Donna & Paul Offenbecher
 Julia O'Neill
 Janice Olson
 David Ostrodka
 Terry Conour & Georgia Oswald
 Martha Palit
 Carolyn & Larry Pater
 Esther Patt
 Donna Cox & Robert Patterson
 Vicki & Robert Patton
 Lois Pausch
 Jean & G. David Peters
 Mary Phillips
 Ann & Keith Pollok
 Angela & David Purkiss
 Karen Rao
 Lori Rath
 Judith Rathgeber
 Deborah & Michael Reagan
 Margaret A. Reagan
 Julie & William Rettberg
 Carole & Adam Richardson
 Connie Rieken
 Charles Rohrbaugh
 Thomas Rozanski
 The Walter E. Rucker Family
 Beverly Sanford
 Deborah Allen & Howard Schein
 Mary Jane and Todd Schermer
 Peggy Schickedanz
 Susan K. & Paul K. Schlesinger
 Grace & William Schoedel
 Kathleen & Mark Schoeffmann
 Karl Heinz Schoeps
 Dawn Schultz
 Patricia Fowler & Jose Schutt-Aine
 Judy & John Sehy
 Philip J. Seldis
 Rochelle Sennet
 Alys & Daniel Shin
 Lily Siu
 Elzbieta & Piotr Skorupa
 Deborah & James Smith
 Elyse Rosenbaum & Robert Smith
 Marianne Abbey-Smith & Campbell
 Smith
 Avigail & Marc Snir
 Melissa Breen & Cheryl Snyder
 Leellen & Philip Solter
 Penelope & Anthony Soskin
 Nancy Sottos
 Peter Cohen & Jeffrey Sposato
 Beth Stafford
 Deborah Stewart
 Jane Teresi & James Stewart

Gary Stitt
 Andrea Beller & Kenneth Stolarsky
 Tara & Jeff Swearingen
 Catherine Thurston
 Debra & Edward Tiedemann
 Diane Durbin & David Tjaden
 Jonathan Trupin
 Joan & Stanley Tunnell
 Julia & Thomas Ulen
 Grant Ullrich
 Candice & Frederick Underhill
 Anne Silvius & Albert Valocchi
 Cynthia Vandeventer
 Bette & Johannes Van Es
 Helen Vedder
 Carol Veit
 Linda & R. E. Veltman
 Julie Mason-Vermeulen & Paul Henri
 Vermeulen
 Shirley Walker
 June & Ashton Waller
 Diane & James Wardrop
 Mari McKeeth & Heidi Weatherford
 Ann & Ronald Webbink
 Cheryl & Russ Weber
 Kathy & Al Wehrmann
 Carl Pius Weibel
 Elizabeth Weiss
 Michelle & Michael Wellens
 Deborah & Michael Westjohn
 Paul E. Weston
 Karen & John Whisler
 Stephanie Daniels & Steven White
 Donna & Thomas Williams
 Karen Taylor Willis & Tymothé Willis
 Susan & Mark Wisthuff
 Ava & Richard Wolf
 Timothy Wong
 Janie & Ehud Yairi
 Wendy & Glen Yang
 Rittchell & Peter Yau
 Michael Yonan
 Ruth Yontz
 Sally & Stephen Zahos
 Zhongmin Zhu
 Yvonne & Gerard Ziegler
 Maureen Reagan & Bruce Zimmerman
 Sharon Shavitt & Steven Zimmerman
 Jillian & Christopher Zwilling

And gifts from five Anonymous donors

Student Loop

Ziyi Cao
Yu Ju Chang
Pyunghwa Choi
Min-Hsueh Chiang
Zhijie Dong
Xinyi He
Alexander Ho
Ethan Huang
Abhishek Joshi
Hannah Leung
Andre Li
Samuel Li
Zeyu Li
Tongyu Liu
Siang Liu
Sinyee Lu
Xuhao Luo
Haozhe Si
Angela Sun
Jinghan Sun
Zhuoqi Tao
Minyang Tian
Yannan Tian
Michelle Wang
Runxuan Wang
Zikui Wang
Minshan Wei
Tatum Wilson
Junzhe Wu
Xinhe Xu
Xinyang Xu
Zhi Yan
Junhong Ye
Zhiheng Ye
Mingyue Yu
Shuning Zhang
Taige Zhang
Xingjian Zhang
Yifan Zhang
Zhengyu Zheng
Huilin Zhu

Memorial Gifts to the Loop

Robert L. Bender
Amy Chrisse
Margaret & Scott Cline
Susan & Michael Haney
Betsy Hendrick
Cherie & William Hodrick
Laurie & Robert Hodrick
Ingrid & Bruce Hutchings
Judith & J.T. Iversen
Elizabeth Johnston

Mary & L.R. Jones
Kimberly & Donald Knoche
Barbara & Gary Koritz
Linda & J.B. Luedeke
Suzanne & John Magerko
Sarah & Robert Nemeth
Charles Oellermann
Lois & Robert Resek*
The Walter E. Rucker Family
Sheleen Sandberg
Julia & Thomas Ulen
MaryBeth Walker
Alex P. Bhanos
Susanne Bhanos
George R. Carlisle
Debra & Kenneth Bezan
Donald W. Clegg
Ingrid & Bruce Hutchings
Doris H. Harvey
Vicki & Alan Good
Jenny & Dick Harvey
Harry Haile
Mary & William Bahnfleth
Mary & Kevin Barry
Marcia Billhartz
Cindy & Brette Dorris
Karen & Robert Sibert
Louise & Douglas Wadas
James B. Kaler
Kristen Fischer
Elizabeth Rockman & Gregg
Homerding
Jennace & David Linton
Alice Pfeffer
Joan Farwell-Sargent & Michael
Sargent
University of Illinois Department of
Astronomy
Paula Watson
Ann & Ronald Webbink
Deborah A. Klippel
Kathryn Kelly
Gary E. Mason
Vicki & Donald Burke
Ann Einhorn
Sue & Tom Falender
Eileen & William Kohen
Paula Kaufman
Marsha & Robert Klein
Jan Erkert & Bernt Lewy
Susan Cohen & George Monahan
Michelle Suhrbur-Morrell & Richard
Morrell
Janet & Douglas Nelson
Diane & Fred Ore

Brenda & Stephen Pacey
Mary Perlstein
Marie & Tom Slattery
Phyllis & Rand Spiro
Diane Durbin & David Tjaden
Bette & Johannes Van Es
Lynn Weisel Wachtel & Ira Wachtel
Ann & Ronald Webbink
Hana & David Wickersheimer
Susan S. McDonald
Anonymous
Charles J. & Joanne J. McIntyre
The McIntyre Family
Diane K. Miller
Ann Einhorn
Marilyn J. Nichols
K.S. & Torin Hannan
Campo E. Palencia
Elaine Fowler Palencia & Michael
Palencia-Roth
Melvin Rubin
Lesley Rubin
Annette H. Schoenberg
Jannette & Donald Helfrich
Myron J. Sholem
Frances & Marc Ansel
Edith A. Stotler
Richard Noel
Julia O'Neill
Kathy & Al Wehrmann
Scott White
Nancy Sottos
Robert Malik Winter
Sarah Hasib
Pete & Molly Yunyongying

KRANNERT CENTER VOLUNTEERS

COMMUNITY VOLUNTEERS

Paula Abdullah
Nisha Aggarwal
Elizabeth Allison
Harold Allston
Brant Asplund
Tammy Asplund
Mike Atkinson
Debora Avelino
Ron Baker
Jane Barry
Heather Baseler
Pam Bedford
Paul Beinhoff
Janice Bellington
Ann Bergeron
Kathy Bergeron
Priya Bhatt
Shohan Bhattacharya
Karen Bojda
Brunna Bozzi
George Brock
Jonne Brown
Krishni Burns
Mark Casco
Felix Chan
Yoline Chandler
Coco Chen
Wen-Chi Chen
Kathleen Corley
Kathleen Correa
Jessica Crane
Jessica Dager
Millie Davis
Cara Day
Kasandra Delafuente
Lori Deyoung
William Dick
David Dorman
Astrid Dussinger
Kathy Dwyer
Sheryl Dyck
Peter Dyck
Debra Eichelberger
Stacey Elliott
Beth Engelbrecht-Wiggins
Richard Engelbrecht-
Wiggins
Roger Epperson
Vennie Ewing
Elizabeth Faulkinberry
Judy Federmeier
Cliff Federmeier
Dee Feickert
Andrea Fierro

Peter Floess
Patricia Floess
B. Jean Flood
Richard Flood
Elizabeth Frankie
Roger Fredenhagen
Bianca Galvez
Zeidy Garcia
Inga Giles
Emma Glezer
Robin Goettel
Michelle Gonzales
Gene Grass
Sandy Haas
Catherine Haney
Katherine Hansen
Susan Hansen
Tonya Hartman
Mike Havey
Kathy Havey
Judith Haydel
James Hayes Jr.
Kate Heiberger
Cynthia Helms
Kathy Henry
Abby Heras
Joan Hood
Peter Hood
Mary Hosier
Betsy Hunter
Ingrid Hutchings
Elizanena Ibarra
Janice Impey
Laurie Jacob
Roland Jean
Cynthia Jean
Sten Johansen
Diana Johnsn
Marcy Joncich
Carlton Kagawa
Debra Karplus
Karan Keith
Janeane Keller
Patti Ketchmark
Ashley Kirby
Daniel Krehbiel
Spencer Landsman
Linda Larson
Diane Lassila
Warren Lavey
Josephine Lee
Hannah Lee
Eunsun Lee
Vincent Leonard
Jennifer Lin
Fei Lin

Feikai Lin
Xiao Lin
Sheila Loosevelt
Penny Lopez
Lynda Lopez
Robert Lou
Ginger Lozar
Michelle Lynn Gill
Janice Maddox
Marguerite Maguire
Mary Manley
Marina Marjanovic
Nenad Marjanovic
Nicole Martinez
Bobbi McCall
Teri McCarthy
Sarah McDougal
Jim McEnerney
Linda McEnerney
Liz McMillen
Susan Meinkoth
Kathy Metcalf
Sharron Mies
David Mies
Martha Milas
Carol Miles
Carol Miller
Michael Miller
Julie Mills
Patrick Mills
Jihyeon Min
Margrith Mistry
Frank Modica
Martha Moore
Thom Moore
Pnina Motzafi-Haller
Christina Myers
Jane Myers
Manisha Naganatanahalli
Linda Neider
Michael Nelson
Peter Newman
Jerome Ng
Johnson Nguyen
Dick Norton
Saray Ocampo
Alejandra Ochoa
Marjorie Olson
Carol Osgood
Brenda Pacey
Cynthia Perez
Pezz Pezz
Joel Plutchak
Renee Potter
Carolyn Presley
Robbie Pulliam

James Quisenberry
Jill Quisenberry
Anne Raczak
Beverly Rauchfuss
Sam Reese
Victoria Rice
Monique Rivera
Marcelo Rosa Mazzocato
Laurel Rosch
Joyce Ruder Jackson
Tanya S
Faaiza Saif
Corinne Saldeen
Uriel Sanchez
Jean Sandall
Christian Sarol
Barbara Schleicher
Dawn Schultz
Izzy Scott
Christel Seyfert
Lei Shanbhag
Edward Snyder
Isaac Soloveychik
Jennifer Steele
Carolyn Stewart
Margaret Stillwell
Carrie Storrs
Judy Swiger
Weifeng Sun
Casey Tan
John Taylor
Alice Taylor
Adrian Testo
Jamie Thomas-Ward
Lee Trail
Pat Tuchman
Allan Tuchman
Barbara Turner
Julia Ulen
Lynda Umbarger
Valeria Vargas
Dianna Visek
Frank Vivirito
Kathy Vivirito
Louise Walczak
Spencer Walden
Anna Maria Watkin
Jean Weigel
Whitney Welsh
Linda Wessels
Jasmine White
Kathy Wicks
Liesel Wildhagen
Diane Wilhite
Ed Wilhite
Douglas Williams

Susie Wright
Lei Xia
Yu Xia
Nancy Yeagle
Sally Zahos
Jennie Zermeno
Nicole Zhang
Rui Zhao
Wenbin Zhou
Bruce Zimmerman
**KRANNERT CENTER
STUDENT ASSOC.**
Administrative Board
Diana Pham, President
Alexa Bucio, Vice President
Rochelle Tham, Secretary
Trevor Santiago, RSO
Liaison Officer
Judy Chiang, Event
Coordinator
Emily Yan, Website Chair
Cedric Mathew, Treasurer

Members

Aki Akhauri
Michelle Burns
Jingwen Dai
Rowan Frantz
Elena Gonzalez
Jessica Gossen
Stanley Gu
Ally Guo
Hayley Kelleck
Haley Kennedy
Ryan Lin
Xiao Lin
Jenny Liu
Seren Liu
Sian Liu
Yuanze Luo
Christine Millins
Samantha Moran
Jess Nathan
Daniel Oster
Yuetting Su
Fu Sun
Haley Van Patten
Claire Wu
Xuan Yi
Andy Yoon
Menghao Yu
Yangxue Yu
Lucia Zhang
Valerie Zhao

KRANNERT CENTER STAFF

Mike Ross, Director
Terri Anne Ciofalo, Associate Director
for Production
Maureen V. Reagan, Associate Director
for Marketing

EVENTS

Andrew Giza, Events Director
Andrew Almeter, Senior Production
Coordinator for Events
Bree Brock, Production Coordinator
for Events
Seth Wheeler, Technical Coordinator
for Events

PROGRAMMING AND ENGAGEMENT

Jason Finkelman, Artistic Director of
Global Arts Performance Initiatives
Emily Laugesen, Co-Director of
Engagement
Sam Smith, Director of Civic Engagement
and Social Practice

ADVANCEMENT

Cheryl Snyder, Director of Advancement
Bethany Whoric, Associate Director
of Advancement

FINANCE AND OPERATIONS

Business Office

Katie Brucker, Debbie Delaney, Stacey
Elliott, Shelly Thomas-Eichorn,
Accounting Staff
Tara Heiser, Human Resources Support

Building Operations

John O. Williams, Facility Manager
Tony Mapson, Assistant Facility Manager
Joe Butsch, Building Electrician
Jared Painter, Assistant Chief Building
Operations Engineer
Scott Butler, Eric Carr, Emmett Catlin,
Austin Dearth, John Ekstrom, Bryan
Franzen, Mark Lashbrook, Jacob
Lerch, Kevin Logue, Jessica Fancher,
Attendants
Glenda Dalton, Office Support Associate

MARKETING

Maureen V. Reagan, Associate Director
for Marketing

Communications

Linea Johnson, Communications Director
Sean Kutzko, Assistant Communications
Director
Nicholas Mulvaney, Senior Designer
Jodee Stanley, Program and Web Editor

Public Services

Lisa Lillig, Client Relations & Food Services
Director
Elizabeth Henke, Stage 5 Bar Manager
Michael Bunting, Intermezzo Supervisor
Amy Thomas, Director of Food Production
Abraham Castro, Assistant Director of
Food Preparation
Zia Moon, Krannert Center Showcase
Director, Office and Communications
Support Specialist
Whitney Havice, Interim Ticketing and
Patron Services Director
Ty Mingo, Assistant Ticket Services
Director
Jon Proctor, Nick Wurl, Ticket Sales
Supervisors
Ann-Marie Dittmann, Patron Services
Assistant Director
Adrian Rochelle, Front of House
Performance Supervisor

PRODUCTION

Terri Anne Ciofalo, Director
of Production
Maria Miguens, Interim Production
Manager

Audio Department

Rick Scholwin, Audio Director
Alec LaBau, Associate Audio Director/
Video Director

Costume Shop

Andrea Bouck, Costume Director
Richard Gregg, Costume Rentals Director/
Wardrobe Adviser/Associate Costume
Director
Paige Stewart-Rankins, Hair & Makeup
Supervisor
April McKinnis, EB McTigue,
Cutters/Drapers
Julianna Steitz, Kari Little-McKinney,
Theatrical Stitchers

Lighting Department

Lisa Kidd, Lighting Director
David Krupla, Associate Lighting Director
Nick Jukes, Lighting and Media
Technician

Properties Department

Adriane Binky Donley, Properties Director
Kira Lyon, Assistant Properties Director

Scene Shop

Ryan Schultz, Technical Director
Tatsuya Ito, Associate Technical Director
Bill Kephart, Scene Shop Chief Clerk
Bobby Reynolds, Theatrical Scene Shop
Coordinator
Liam Romano, Theatrical Scene Shop
Assistant

WE'RE SO GLAD YOU'RE AT THE CENTER

We work to create the best possible setting for the experiences you seek and find here.

NECESSARIES

Restrooms are located in the foyers of Foellinger Great Hall, Tryon Festival Theatre, and Colwell Playhouse; the east entrances on the Lobby level; and in each elevator lobby on Level 1 and Level 3. Lobby restrooms and one restroom in each elevator lobby are fully accessible and contain baby-changing stations.

Ushers will be happy to provide you cough drops courtesy of St. Joseph Apothecary, or disposable foam earplugs if the place starts rockin'.

If you or a companion needs medical assistance, contact an usher or other staff member.

Please take a moment before the performance to note the theatre exits nearest to you. If it becomes necessary to evacuate the theatre, please remain calm, follow the instructions of the house staff, and exit in an orderly fashion to the appropriate safe meeting location, which will be announced to you.

SIGHTS AND SOUNDS

The use of cell phones, cameras, and recording devices during performances is prohibited unless otherwise announced from the stage.

LATE ARRIVALS

As a courtesy to performers and audience members, latecomers will be seated only at times selected in advance by the artist. Should you find that you've arrived late to a performance, our Patron Services staff will keep you informed about the earliest seating opportunity.

LOST ITEMS

If you are in need of Lost and Found, please visit the Patron Services counter. We will do our best to reunite object and owner!

TICKET RETURNS

If you find you can't attend a performance, please contact the Ticket Office in advance, preferably by 6pm the day before the performance (kran-tix@illinois.edu or 217.333.6280). We never charge a handling fee on ticket transactions.

SERVICES

Krannert Center for the Performing Arts is committed to making experiences accessible for all patrons, and we are delighted to provide a number of services to assist you. Krannert Center is equipped with an assisted listening system, wheelchair-accessible and no-step/few-step seating, and large-print programs, Braille programs, and American Sign Language interpreters are available with three weeks' advance notice.

For assistance regarding your visit, please email: Para ayuda en relación con su visita, favor de enviar un email a:

Pour vous aider dans votre visite, prière de nous envoyer un courriel à:

欢迎! 如若您对我们的造访需要帮助, 请发送电子邮件至:

स्वागत है! अगर आपको अपने रहने के लिए मदद चाहिए, ईमेल कीजिए:

환영합니다! 방문에 관해 도움이 필요하실 때에는 ...
에게 이메일로 문의하시기 바랍니다:

PATRONSERVICES@KRANNERTCENTER.ILLINOIS.EDU
217.333.9716